



NSW LEATHER CO. PTY LTD

Experienced • Progressive • Respectful

Experienced: Three generations of knowledge who understand transparency is key to our clients.

Progressive: We are aware innovation and development is fundamental to being the market leader for our clients.

Respectful: To the environment, employees, customers and the community.

ESTABLISHED 1952

We have nurtured long-term relationships with only the most reputable tanneries across the globe, who observe and adhere to responsible and sustainable practices to protect our environment.

Our leathers are suitable across Commercial and Residential applications, along with a depth of variety for Automotive, Marine and Aviation applications.

We have a dedicated team who will provide a consultative approach to your business and are available to help find the best suited leather for any project.

Our **environmental accreditations** are outlined in the documents associated with the below link. Simply click on the button to view these accreditations and full specification details for our entire leather range.

[VIEW ENVIRONMENTAL ACCREDITATIONS & FULL SPECIFICATION DETAILS](#)

02 | ABOUT

04 | ENVIRONMENT & SUSTAINABILITY

PIGMENTED LEATHER

07 | MILLENNIUM

09 | RAVELLO

10 | AMBIENCE (METALLIC)

SEMI ANILINE LEATHER

14 | SOVEREIGN

16 | MONTE CARLO

18 | CASABLANCA

20 | PROTECH PURE

FULL ANILINE LEATHER

23 | SUNDANCE (WAXED PULL UP)

25 | MURANO (AGED)

27 | LAGUNA (DISTRESSED)

29 | REGAL (BRIGHT FACED)

31 | PANAMA (NATURAL TRANSPARENT)

33 | NORFOLK (HAND STAINED NUBUCK)

35 | NUBUCK

37 | BOTANICAL - VEGETABLE TANNED
BIO BASED PRODUCT

SPECIALITY DESIGNS

40 | PERFORATED OPTIONS

42 | EMBOSSSED EFFECTS





ENVIRONMENT & SUSTAINABILITY

For 70 years NSW Leather Co. has been involved in the leather industry and we understand the need now more than ever, to preserve our planet. It is our responsibility to the next generation.

Leather is a by-product of the meat and dairy industry, and by nature it is far more natural and biodegradable than vinyls and synthetics that try to imitate the natural beauty and supple feel of leather.

Each and every year, the leather industry saves over 73 million tonnes from global landfill through environmentally aware initiatives and regulations to protect the environment.

IN SUPPLYING THE BEAUTIFUL PRODUCTS WE DO, WE ARE COMMITTED TO: -

- **Waste recycling** - obligatory in house purification plants that can purify 97-99% of discharge and be used multiple times in productions phases.
- **Energy efficiency** using thermal, solar and renewal energy sources not only in production where the leather is made, we also are committed to a more sustainable environment and have embraced the use of solar energy at our head office in Sydney, NSW.
- **Replacement of all harmful substances** so that all our leather comply with REACH specifications. There is no Chromium VI or any solvents or substances that appear on the MRSL. We use mostly water-based materials, limiting emissions of VOCs (Volatile Organic Compounds). All partners contribute to ZDHC (Zero Discharge of Hazardous Chemicals).
- **Fully traceability** from the farms the cows are reared in to the hides delivered to you. We know where every hide originates.
- **Investing in research and innovation** that is constantly leading to reduced water, energy, chemicals used for the treatment of waste, helping to lower emissions and increased waste recycling.
- **Replacement of all diesel** with hybrid and electrical Internal transport in tanneries and warehouses.
- **Recycling** of our old samples and colour catalogues, these are given to small handicraft organisations, schools and workshops so that nothing goes to waste.
- The **use of recycled materials** in our sampling and marketing collateral, takes further step towards assisting our environment with creating a sustainable future.
- The tanneries are always striving to **reduce their waste** and to incorporate more bio-sensitive practices with their leathers. They now incorporate in many of the ranges that are produced, the use of vegetable extracts in the tanning process, such as the use of olives or mimosa's.

OUR PARTNERS ARE CERTIFIED WITH OR MEET THE FOLLOWING STANDARDS:



REACH is a regulation of the European Union, adopted to improve the protection of human health and the environment from the risks that can be posed by chemicals, while enhancing the competitiveness of the EU chemicals industry. Promoting alternative methods for the hazard assessment of substances, REACH applies to all chemical substances; not only those used in industrial processes but also in our day-to-day lives. Therefore, the regulation has an impact on most companies across the EU and it places the burden of proof on companies. It stands for Registration, Evaluation, Authorization and Restriction of Chemicals. It entered into force on 1 June 2007. Under REACH there are 3 roles:- Manufacturer, Importer, Downstream users.



The UNI EN ISO 14001: 2015 certification refers to the international standard norm that provides organizations with a reference framework to protect the environment and respond to changes in environmental conditions in balance with the needs of the socio-economic context. It specifies the requirements that allow an organization to achieve the expected results it defines for its environmental management system with a view to continuous improvement.



NSW Leather sources leather obtained from LWG Gold rated Tanneries. The Gold Rating is the maximum score of the LWG certification. The main objective of the Leather Working Group is to develop and maintain a protocol that assesses environmental compliance and corporate practices regarding sustainability by promoting improvements in the leather industry.



Blue Angel testifies to the ecological quality of the leathers sourced by NSW Leather. Blue Angel certified products better protect the environment and human health, thanks to a series of tangible benefits: -

- Less water consumption in the various production phases.
- The use of raw materials produced in a sustainable way.
- The cautious use of resources in the use or disposal phase.
- The absence of harmful effects on health and the environment because they are low in emissions.
- Being easy to recycle.



NSW Leather sources leathers from member of Leather Naturally, an association that promotes the use of sustainable leather produced globally, with the aim of inspiring and informing designers, creators and consumers about its beauty, quality and versatility.





PIGMENTED LEATHER

MILLENNIUM

“tanned to produce a very soft, mellow feel and silky touch”

PIGMENTED LEATHER

Millennium is a range of leather that has a corrected grain with a pigmented finish and a fine embossed effect. Our Millennium hides are tanned to produce a very soft, mellow feel and superb touch. This unique combination makes Millennium the desired benchmark in corrected grain leathers. This range is very durable and excellent for use in high traffic residential and commercial applications.



WHEELMARK CERTIFICATION



BLUE ANGEL CERTIFIED



LWG GOLD RATED

TYPE	Bovine
FINISH	Pigmented
ORIGIN	European
SIZE	Average 4.6sq mtrs
THICKNESS	0.9 - 1.0mm
APPLICATION	Commercial / Domestic - Upholstery, Wall Panels & Curtains
FIRE RATING & CERTIFICATION	Wheelmark Blue Angel AS/NZS 1530.3:1999 AS/NZS 3837:1998 EN ISO 1021-1 & 1021-2 IMO 652 CAL TB – 117 (2013. Sec.1) UNI EN ISO 9001: 2015 FAR A & FAR B (Available Upon Request) Environmental UNI EN ISO 14001:2015 ISO 5660.1-2015 BS 5852:1979 BS EN 1021-1-2:2006
COMPLIANCE TO CHEMICAL COMPOSITION (R.E.A.C.H)	ISO 17226 –1:2008 ISO 17075-2:2017 EN ISO 17234 -1:2010 IMO 652
FLEXING ENDURANCE	EN ISO 5402 > 50,000 CYCLES
COLOUR FASTNESS TO LIGHT	EN ISO 105 B02 (MET.5) ≥ 5 BLU SCALE
COLOUR FASTNESS TO AND FRO RUBBING	EN ISO 11640:1998 Dry 500 ≥ 4 Wet 250 ≥ 4 Sweat 80 ≥ 4 EN ISO 11641 Ph8
TEAR STRENGTH, SINGLE EDGE TEAR	EN ISO 3377-1 ≥ 20N
FINISH ADHESION	EN ISO 11644 ≥ 2.0 N/CM
DETERMINATION OF PH DIFFERENCE FIGURE (ONLY FOR PH < 4)	EN ISO 4045 ≥ 3.5
CARE INSTRUCTIONS	Vacuum regularly with soft brush. Use a damp white cloth that is colourfast and wipe regularly. Do not use detergents, solvents, abrasives. Protect from direct sunlight and heat sources. Avoid sharp objects.

[VIEW ENVIRONMENTAL ACCREDITATIONS & FULL SPECIFICATION DETAILS](#)

MILLENNIUM

* INDICATES INDENT COLOURS
(ALSO AVAILABLE IN PERFORATION)

PERFORATION OPTIONS

REQUEST A SAMPLE



White	Alaska	Chalk	Pumice	Almond	*Panna 403	*Beige 402	*Pebble 448	*Vanilla 428	*Desert 431
Greystone	Taupe	Linen	Orion	Saddle 2-Tone	*Sandy 429	*Fumo 408	*Donkey 436	*Marroncino 410	*Nocciola 411
Stone	Nutmeg	Basil	Mandalay 2-Tone	Tuscany	*Biscuit 434	*Vitamin 433	*Bruciato 415	*Arancio 412	*Sahara 432
Raisin	Brandy 2-Tone	Mudcake	Deuce	Cigar 2-Tone	*Allium 435	*Bordeaux 416	*Red 417	*Purple 451	*Glicine 450
Chocolate	Nero	Gunbarrel	Indigo	Marine	*Acqua 422	*Cloudy 438	*Mauritius 443	*Sky 439	*Pansy 449
Moss	Forest	Cyclone	Crest	Cobalt	*Calypso 442	*Citrus 430	*Malibu 444	*Emerald 445	*Military 446
Harvard Lux	Trinity Lux				*Grey 424	*Denim 440	*Rosso Ferrari 418	*Ghiaccio 404	*Electric Blue 441
					*Burgundy 419	*Giallo 409	*Terracotta 414	*Wool 447	

Colour variations can be expected to occur within each hide, from hide to hide and from batch to batch.

SYDNEY HEAD OFFICE - 16 Anderson Street, Banksmeadow, NSW 2019 | P: +61 2 9355 3600 | F: +61 2 9355 3660 | E: info@leatherco.com.au
MELBOURNE - 107-109 Sackville Street, Collingwood, VIC 3066 | P: +61 3 9417 3466 | F: +61 3 9416 1514 | E: nswimel@leatherco.com.au

RAVELLO

“A versatile leather to withstand all climatic conditions”

PIGMENTED LEATHER

Introducing the Ravello range, developed as a versatile leather to withstand all climatic conditions and heavy traffic. Featuring a semi matt finish and a soft silky touch, Ravello has superior abrasion and wear resistance. With additional technology, it works to protect against varying temperature, moisture and light, which will assist in reducing fade over time. This leather also can be embossed with 17 different prints or 14 different perforations. It is ideal for use in commercial and residential applications as well as public spaces and wall panelling.



WHEELMARK CERTIFICATION IMO 652



BLUE ANGEL CERTIFIED



LWG GOLD RATED

TYPE	Bovine
FINISH	Pigmented
SIZE	Average 4.8sq mtrs
THICKNESS	1.1 - 1.3mm
APPLICATION	Commercial / Residential Applications / Hospitality & High Traffic / Public Spaces & Wall Panelling
COLOUR FASTNESS TO RUBBING DRY 1500 CYCLES, WET 300 CYCLES, PERSPIRATION (ISO11640) 100 CYCLES EVALUATION ISO 105-A03 / A04	UNI EN ISO 11640: 1998 ≥ 4
FIRE RATING & CERTIFICATION	AS/NZS 1530.3-1999 AS/NZS 3837-1998 Group 1
COLOUR FASTNESS TO ARTICIAL LIGHT	UNI EN ISO 105B02 ≥ 4
FINISH ADHESION	ISO 11644 ≥ 4 N/CM
BURNING BEHAVIOUR	FMVSS 302 ≤ 100mm/min
TEAR STRENGTH	ISO 3377-1 ≥ 20 N
TENSILE STRENGTH	ISO 3376 ≥ 130 N
ARTIFICIAL AGEING - 4 HOURS @70°C	MINIMUM ≥ 4
CARE INSTRUCTIONS	Vacuum regularly with soft brush. Use a damp white cloth that is colourfast and wipe regularly. Do not use detergents, solvents, abrasives. Protect from direct sunlight and heat sources. Avoid sharp objects.

[VIEW ENVIRONMENTAL ACCREDITATIONS & FULL SPECIFICATION DETAILS](#)

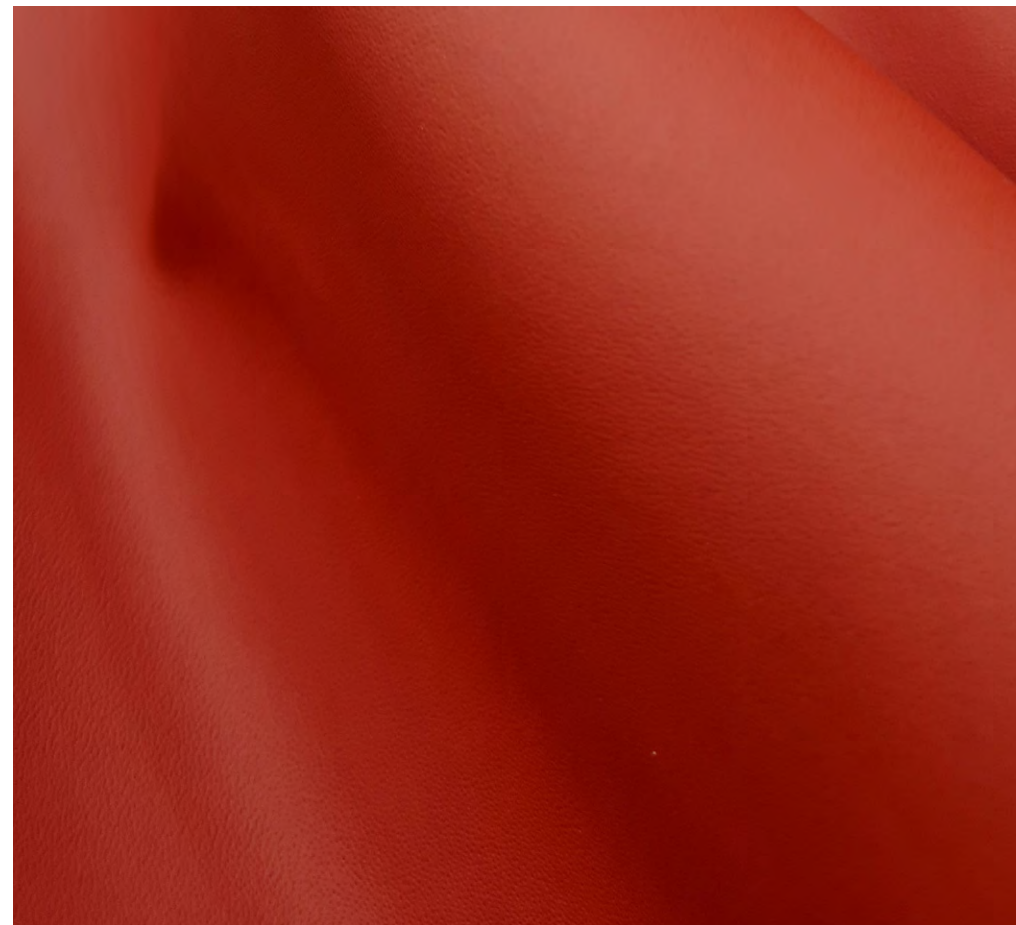
RAVELLO

* INDICATES INDENT COLOURS
(ALSO AVAILABLE IN PERFORATION AND EMBOSSING)

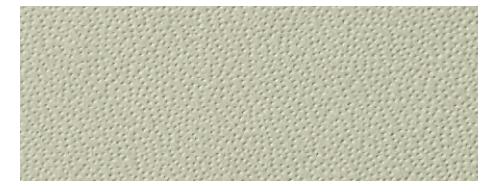
EMBOSSING OPTIONS

*PERFORATION OPTIONS

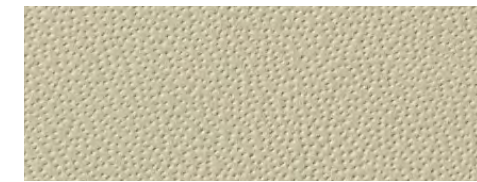
REQUEST A SAMPLE



*1215 Frothy



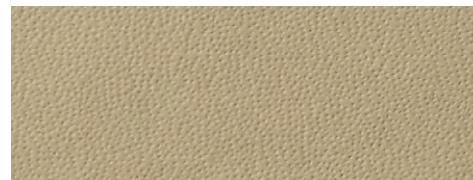
*1230 Sugar



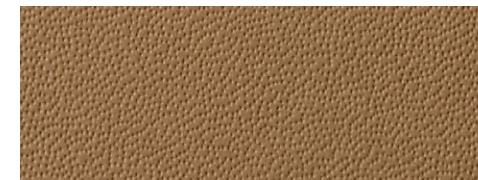
*1226 Lace



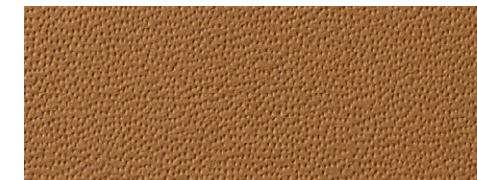
*1242 Lino



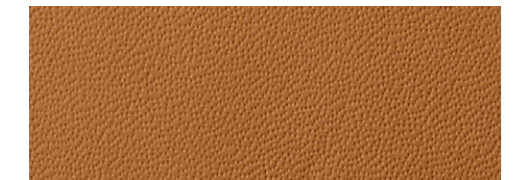
*1200 Oyster



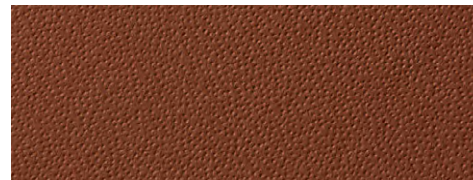
*1223 Cashmere



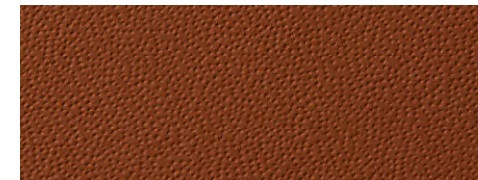
*12337 Clay



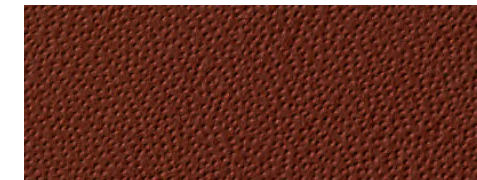
*1225 Peanut



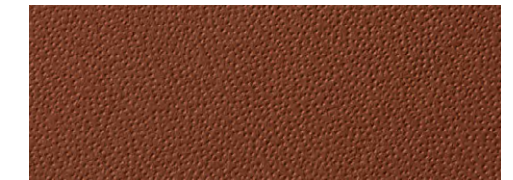
*1221 Cacao



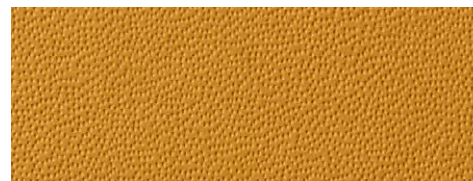
*1239 Caramello



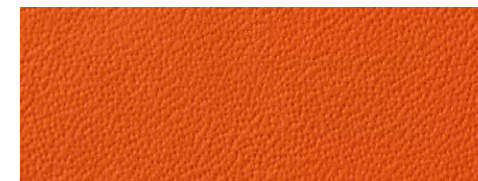
*1227 Bali



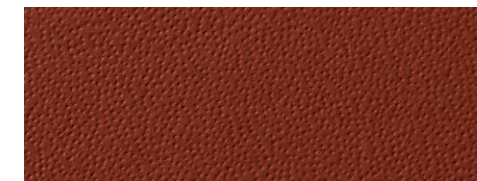
*1220 Cinnamon



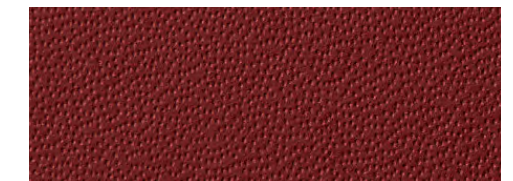
*1228 Sunset



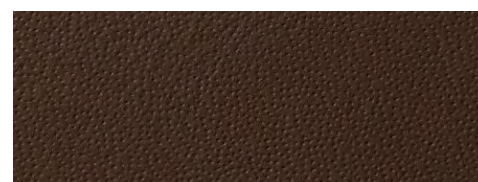
*12343 Arancio



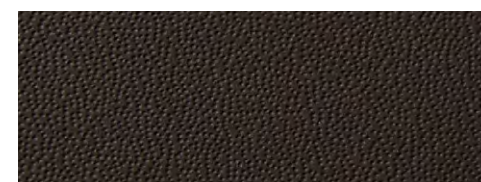
*1211 Carob



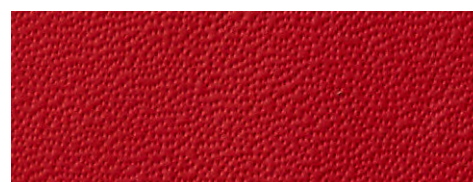
*1229 Sangria



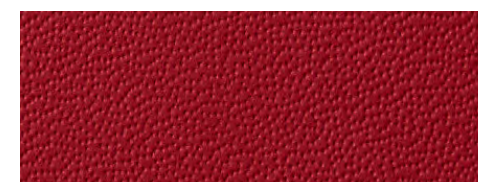
*1240 Umber



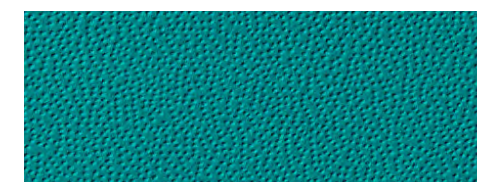
*1231 Penny



*1238 Tomato



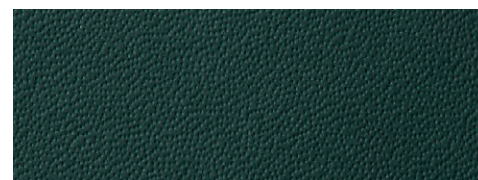
*1210 Autumn



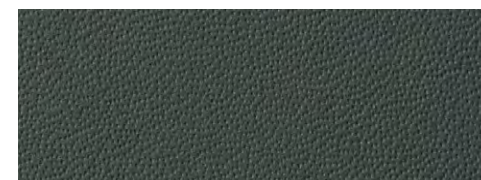
*1233 Sky



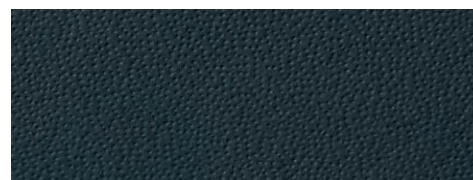
*1218 Pine



*1232 Seaweed



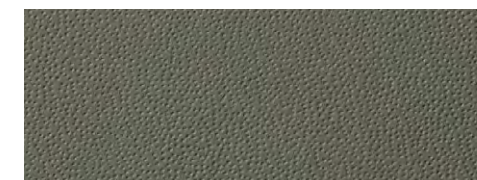
*1234 Adriatic



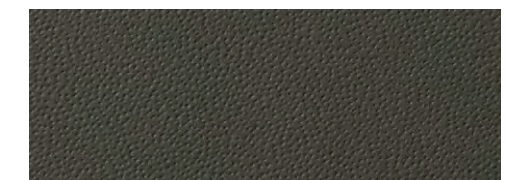
*1208 Bravo



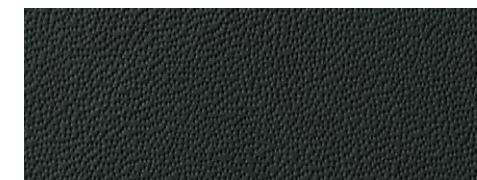
*1241 Flint



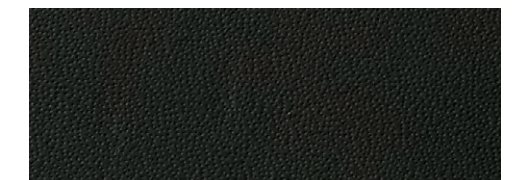
*1235 Foggy



*1205 Shadow



*1236 Charcoal



1207 Black

Colour variations can be expected to occur within each hide, from hide to hide and from batch to batch.

SYDNEY HEAD OFFICE - 16 Anderson Street, Banksmeadow, NSW 2019 | P: +61 2 9355 3600 | F: +61 2 9355 3660 | E: info@leatherco.com.au
MELBOURNE - 107-109 Sackville Street, Collingwood, VIC 3066 | P: +61 3 9417 3466 | F: +61 3 9416 1514 | E: nswmel@leatherco.com.au

AMBIENCE

“a subtle metallic leather boasting commercial and domestic applications, sophistication and elegance”

PIGMENTED LEATHER

This range of metallic leather is produced with a natural grain, created only on the best European selected hides with 16 uniquely inspired shades. The Ambience collection has a soft waxy texture with a semi-gloss surface. This finish of leather performs to the highest level of traffic in commercial and domestic applications.



BLUE ANGEL CERTIFIED



LWG GOLD RATED

TYPE	Bovine
FINISH	Pigmented (Metallic Effect)
ORIGIN	European
SIZE	Average 4.8 - 5.0sq mtrs
THICKNESS	0.9 - 1.0mm
APPLICATION	Commercial / Domestic / Wall Panels / Curtains
FIRE RATING & CERTIFICATION	BS 5852.1979 Match & Cigarette Test BS EN 1021-1-2.2006 Match & Cigarette Test
FLEXING ENDURANCE	EN ISO 5402 I > 50,000 CYCLES
COLOUR FASTNESS TO LIGHT	EN ISO 105 B02 (MET.5) I ≥ 4 BLU SCALE
COLOUR FASTNESS TO AND FRO RUBBING	EN ISO 11640 Dry 500 ≥ 4 Wet 150 ≥ 4 Sweat 80 ≥ 4
SWEAT ALCALINE SOLUTION	EN ISO 11641 PH8
TEAR STRENGTH, SINGLE EDGE TEAR	EN ISO 3377-1 ≥ 20N
CARE INSTRUCTIONS	Vacuum regularly with soft brush. Use a damp white cloth that is colourfast and wipe regularly. Do not use detergents, solvents, abrasives. Protect from direct sunlight and heat sources. Avoid sharp objects.

[VIEW ENVIRONMENTAL ACCREDITATIONS & FULL SPECIFICATION DETAILS](#)

AMBIENCE

* INDICATES INDENT COLOURS
(ALSO AVAILABLE IN PERFORATION AND EMBOSSING)

EMBOSSING OPTIONS

*PERFORATION OPTIONS

REQUEST A SAMPLE



*763 Gunmetal



*760 Bronze



* 759 Copper



* 761 Pewter



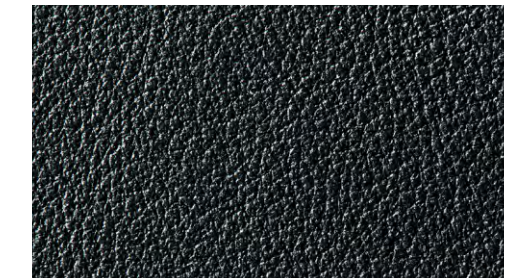
*758 Orchid



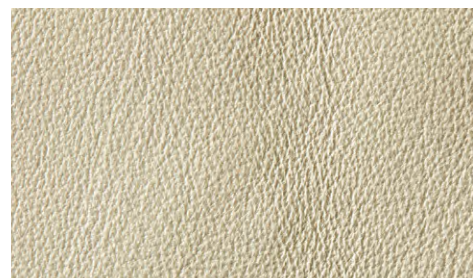
*757 Celeste



*754 Platinum



* 765 Graphite



*750 Antique White



*753 Bisque



* 752 Rustic Pearl



* 751 Linen



* 762 Sterling



* 764 Limestone



*755 Gold Leaf



* 756 Bullion

Colour variations can be expected to occur within each hide, from hide to hide and from batch to batch.

SYDNEY HEAD OFFICE - 16 Anderson Street, Banksmeadow, NSW 2019 | P: +61 2 9355 3600 | F: +61 2 9355 3660 | E: info@leatherco.com.au
MELBOURNE - 107-109 Sackville Street, Collingwood, VIC 3066 | P: +61 3 9417 3466 | F: +61 3 9416 1514 | E: nswmel@leatherco.com.au



SEMI ANILINE LEATHER

SOVEREIGN

“is a beautiful soft tanned, waxy semi aniline with a natural appearance”

SEMI ANILINE LEATHER

This range of leather is a beautiful soft tanned, waxy Semi Aniline with a natural appearance and is produced on only the best quality hides. Our Sovereign range is available in a multitude of elegant and vibrant colours. It is a full bodied leather thus giving a rich, supple feel. Due to the high end finish on the hides, this leather is very durable and suitable for use in high traffic areas and heavy use commercial and residential applications.



WHEELMARK CERTIFICATION



BLUE ANGEL CERTIFIED



LWG GOLD RATED

TYPE	Natural Grain Bovine
FINISH	Semi Aniline
ORIGIN	European
SIZE	4.8sq mtrs
THICKNESS	1.2 - 1.4mm
APPLICATION	Commercial / Domestic - Upholstery, Wall Panels & Curtains
FIRE RATING & CERTIFICATION	Wheelmark Blue Angel AS/NZS 1530.3-1999 AS/NZS 3837-1998 IMO 652 ISO 5660.1-2015 BS 5852:1979 BS EN 1021-1-2:2006 UNI EN ISO 9001: 2015 UNI EN ISO 14001:2015 CAL TB – 117 (2013. Sec.1)
COMPLIANCE TO CHEMICAL COMPOSITION (R.E.A.C.H)	ISO 17226 -1:2008 ISO 17075-2:2017 EN ISO 17234 -1:2010
FLEXING ENDURANCE	EN ISO 5402 > 50,000 CYCLES
COLOUR FASTNESS TO LIGHT	EN ISO 105 B02 (MET.5) = 5 BLU SCALE
COLOUR FASTNESS TO AND FRO RUBBING	EN ISO 11640:1998 Dry 500 ≥ 4 Wet 250 ≥ 4 Sweat 80 ≥ 4 EN ISO 11641 Ph8
TEAR STRENGTH, SINGLE EDGE TEAR	EN ISO 3377-1 ≥ 20N
FINISH ADHESION	EN ISO 11644 ≥ 2.0 N/CM
DETERMINATION OF PH DIFFERENCE FIGURE (ONLY FOR PH < 4)	EN ISO 4045 ≥ 3.5
CARE INSTRUCTIONS	Vacuum regularly with soft brush. Use a damp white cloth that is colourfast and wipe regularly. Do not use detergents, solvents, abrasives. Protect from direct sunlight and heat sources. Avoid sharp objects.

[VIEW ENVIRONMENTAL ACCREDITATIONS & FULL SPECIFICATION DETAILS](#)

MONTE CARLO

“is a range which is bright and colourful, with a beautiful smooth grain texture.”

SEMI ANILINE LEATHER

Flamboyant and exciting is often used to describe Monte Carlo. The name certainly represents this wonderful range of leather. The Monte Carlo range is bright and colourful with a beautiful smooth grain texture, showcasing a huge range of vibrant colours. Boasting extreme versatility due to its high performance finish and full bodied nature, this Semi Aniline Italian leather is suitable for use in all commercial and residential high traffic applications as well as for Auto, Marine and Aviation.

TYPE	Bovine
FINISH	Semi Aniline
ORIGIN	Italian
SIZE	Average 4.8sq mtrs
THICKNESS	1.2 - 1.4mm
APPLICATION	Commercial / Domestic - Upholstery, Wall Panels & Curtains
FLEXING ENDURANCE	ISO 5402 > 50,000 CYCLES
COLOUR FASTNESS TO LIGHT	ISO 105 B02 ≥ 6 BLU SCALE
COLOUR FASTNESS TO AND FRO RUBBING	EN ISO 11640 Dry 1000 ≥ 4 Wet 250 ≥ 4 Sweat 250 ≥ 4
SWEAT ALCALINE SOLUTION	EN ISO 11641 PH8
TEAR STRENGTH, SINGLE EDGE TEAR	EN ISO 3377-1 ≥ 20N
FINISH ADHESION	EN ISO 11644 ≥ 20 N/CM
DETERMINATION OF PH DIFFERENCE FIGURE (ONLY FOR PH < 4)	EN ISO 4045 ≥ 3.5 ≤ 0.7
CARE INSTRUCTIONS	Vacuum regularly with soft brush. Use a damp white cloth that is colourfast and wipe regularly. Do not use detergents, solvents, abrasives. Protect from direct sunlight and heat sources. Avoid sharp objects.

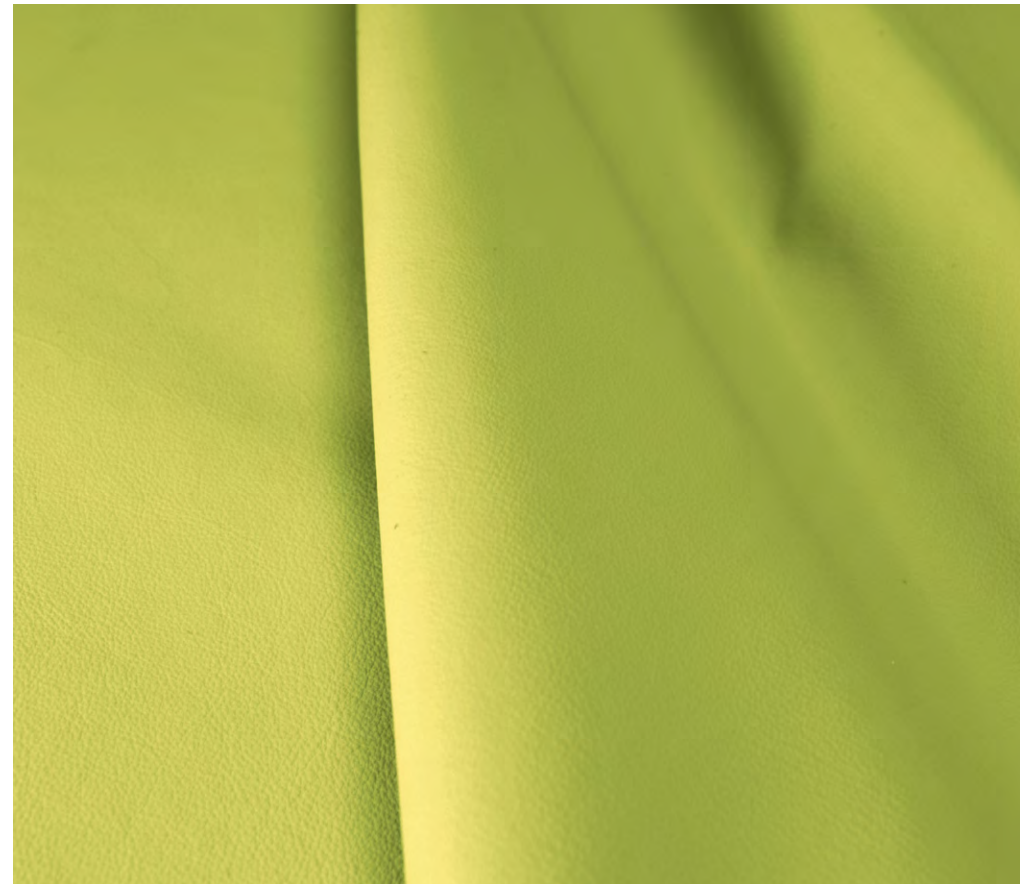
[VIEW FULL SPECIFICATION DETAILS](#)

MONTE CARLO

* INDICATES INDENT COLOURS
(ALSO AVAILABLE IN PERFORATION)

*PERFORATION OPTIONS

REQUEST A SAMPLE



CASABLANCA

“is a beautiful soft tanned semi aniline, with a silky touch”

SEMI ANILINE LEATHER

This range of leather is a beautiful soft tanned Semi Aniline, produced on best quality European hides. The appearance has a semi-matt finish to it and when fully upholstered it gives a very smooth and luxurious look. Casablanca is a very durable leather which is good for use in high traffic residential and commercial applications.



WHEELMARK CERTIFICATION



BLUE ANGEL CERTIFIED



LWG GOLD RATED

TYPE	Natural Grain Bovine
FINISH	Semi Aniline
ORIGIN	European
SIZE	Average 4.6sq mtrs
THICKNESS	0.9 - 1.1mm
APPLICATION	Commercial / Domestic - Upholstery, Wall Panels & Curtains
FIRE RATING & CERTIFICATION	Wheelmark Blue Angel AS/NZS 1530.3-1999 AS/NZS 3837-1998 IMO 652 ISO 5660.1-2015 BS 5852:1979 BS EN 1021-1-2:2006 UNI EN ISO 9001: 2015 FAR A & FAR B (Available Upon Request) Environmental UNI EN ISO 14001:2015 CAL TB – 117 (2013. Sec.1)
COMPLIANCE TO CHEMICAL COMPOSITION (R.E.A.C.H)	ISO 17226-1:2008 ISO 17075-2:2017 EN ISO 17234-1:2010
FLEXING ENDURANCE	EN ISO 5402 > 50,000 Cycles
COLOUR FASTNESS TO LIGHT	EN ISO 105 B02 (Met.5) ≥ 5 Blu Scale
COLOUR FASTNESS TO AND FRO RUBBING	EN ISO 11640:1998 Dry 500 ≥ 4 Wet 250 ≥ 4 Sweat 80 ≥ 4 EN ISO 11641 Ph8
TEAR STRENGTH, SINGLE EDGE TEAR	EN ISO 3377-1 ≥ 20N
FINISH ADHESION	EN ISO 11644 ≥ 2.0 N/Cm
DETERMINATION OF PH DIFFERENCE FIGURE (ONLY FOR PH < 4)	EN ISO 4045 ≥ 3.5
CARE INSTRUCTIONS	Vacuum regularly with soft brush. Use a damp white cloth that is colourfast and wipe regularly. Do not use detergents, solvents, abrasives. Protect from direct sunlight and heat sources. Avoid sharp objects.

[VIEW ENVIRONMENTAL ACCREDITATIONS & FULL SPECIFICATION DETAILS](#)

CASABLANCA

* INDICATES INDENT COLOURS
(ALSO AVAILABLE IN PERFORATION)

PERFORATION OPTIONS

REQUEST A SAMPLE



*Beige 604	*Chalky 663	*Cielo 649	*Frozen 668	*Acciaio 630	*Sabbia 628	*Wood 609	*Miel 679	*New Cognac 680	*Antic 616
*Cinder 648	*Smoke 639	*Pelle 664	*Marmo 665	*Earth 667	*Cotto 656	*Nicciola 607	*Marrone 608	*Fango 627	*Muscat 681
*Stone 629	*Mastice 676	*Crema 605	*Sour 683	*Giallo 62	*Moretto 646	*Mogano 610	*Castagna 612	*Testa Moro 611	*Coffee 682
*Giallino 619	*Arancio 618	*Begonia 617	*Rosso 614	*Mattone 613	*Cenere 669	*Asfalto 660	*Inox 671	*Highway 670	*New Grey 675
*Rosso Antico 657	*Bordeaux 615	*Confetto 678	*Siena 638	*Fuxia 700	*Iris 673	*Sky 687	*Misty 672	*Lavanda 689	*Piombo 688
*Cerise 699	*Amaranto 655	*Extra Blood 704	*Ghost 695	*Ombretto 652	*Corvette 690	*Electro 701	*Avio 643	*Ming 703	*Dark Blue 702
*Tortora 659	*Malt 677	*Rosa 651	*Orchid 698	*Persia 697	*Notte 644	*Mascara 640	*Lotus 641	*Aquamarina 693	*Octane 674
*Lila 650	*Viola 633	*Prugna 696	*Pergamena 654	*Cipria 606	*Modern Blue 694	*Midnight 691	*Colvert 692	*New Celery 684	*Verde 62
Miso 2-Tone	*Burgundy 625	*Aloe 685	*Green 631	*Foresta 658	*Abete 686	*Pino 653			

Raffia	Snow	Whisper	Mink	Hickory
Cognac Lux	Espresso Lux	Coco	Storm	Pinot Lux
Ocean	Shamrock 2-Tone	Outback 2-Tone	Steel	Thunder
Nero	*Latte 635	*Gesso 634	*Vaniglia 602	*Ghiaccio 666

Colour variations can be expected to occur within each hide, from hide to hide and from batch to batch.

PRO-TECH PURE

Antibacterial and
Antiviral protection
combining luxury with
innovative technology

Pro Tech Pure combines the latest patented "protection" technology to assist in eliminating viruses and bacteria from replicating on the surface of the leather and thereby spreading. This unique Anti-Bacterial, Anti-Viral treatment never before offered in Australia creates a barrier on the surface of the leather to stop pathogens from spreading or replicating, enabling a safer healthier environment where used.



WHEELMARK CERTIFICATION



BLUE ANGEL CERTIFIED



LWG GOLD RATED

Type	Natural Grain Bovine
Finish	Semi Aniline
Origin	European
Size	Average 5.0 + sqms
Thickness	1.1 / 1.3mm
Application	Commercial / Domestic - Upholstery, Wall Panels & Curtains
Fire Rating & Certification	Wheelmark Blue Angel AS/NZS 1530.3:1999 AS/NZS 3837:1998 - Group 1 IMO 652 BS 5852:1979 BS EN 1021-1-2:2006 UNI EN ISO 9001: 2015 FAR A & FAR B (Available Upon Request) Environmental UNI EN ISO 14001:2015 CAL TB - 117 (2013, Sec.1)
Compliance To Chemical Composition (R.E.A.C.H)	ISO 17226-1:2008 ISO 17075-2:2017 EN ISO 17234-1:2010
Flexing Endurance	EN ISO 5402 > 50,000 Cycles
Colour Fastness To Light Exposition Energy 16,000 Kg/Sqms	EN ISO 105 B02 (MET.5) ≥ 5 BLU SCALE
Colour Fastness To And Fro Rubbing	EN ISO 11640:1998 Dry 500 ≥ 4 Wet 250 ≥ 4 Sweat 80 ≥ 4 EN ISO 11641 Ph8
Tear Strength, Single Edge Tear	EN ISO 3377-1 ≥ 20N
Finish Adhesion - Dry	EN ISO 11644 ≥ 2 N/cm
Key Component – Anti – Bacterial Efficacy Measurement Of Anti-Bacterial Activity On Non-Porous Surfaces	ISO 22196
Test Method To Assess Antibacterial Activity	ISO 16187
Standard Test Method For Determining The Anti-Microbial Activity Of Anti-Microbial Agents Under Dynamic Contact Conditions	ASTM E 2149
Standard Test Method For Determining The Activity Of Incorporated Anti-Microbial Agent(s) In Polymeric Or Hydrophobic Materials	ASTM E 2180
Key Component – Anti – Virus Efficacy Determination Of Antiviral Activity	ISO 18184
Care Instructions	Vacuum regularly with soft brush. Use a damp white cloth that is colourfast and wipe regularly. Do not use detergents, solvents, abrasives. Protect from direct sunlight and heat sources. Avoid sharp objects.

[VIEW ENVIRONMENTAL ACCREDITATIONS & FULL SPECIFICATION DETAILS](#)

*PERFORATION OPTIONS

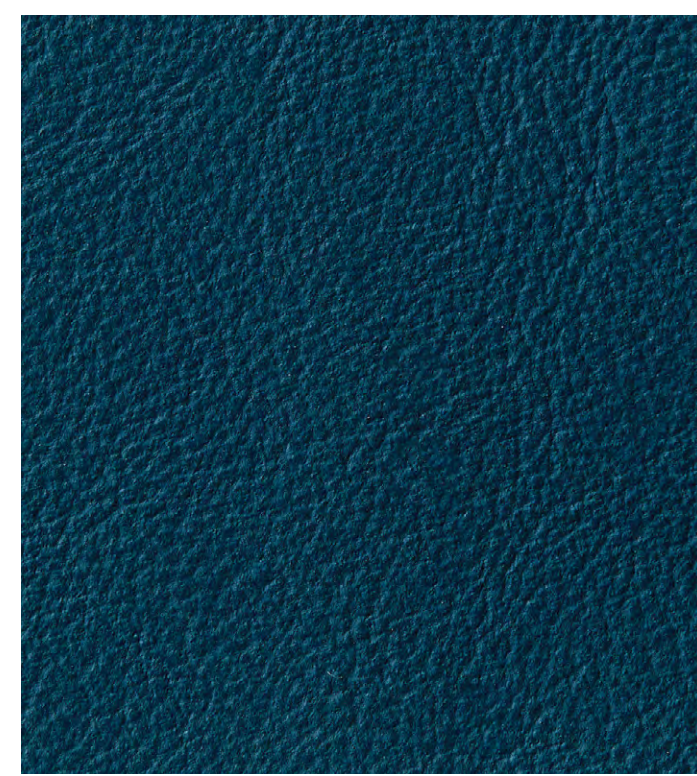
REQUEST A SAMPLE

* INDICATES INDENT COLOURS
(ALSO AVAILABLE IN PERFORATION AND EMBOSSING)

PRO-TECH PURE

Pro-Tech Pure is ideal for use in:

- Aged Care Facilities
- Hospitality and public seating venues
- Contract
- Office and Work Environments
- Schooling and Auditoriums
- Aviation
- Home and Residential
- Automotive Seating and Vehicle applications



*10346 Aegean

*10332 Wenge	*10318 Currant	*10317 Nikita	*10322 Plum	*10316 Bobbi	*10347 Maya	*10319 Blush	*10305 Skin	*10342 Field	*10343 Palace
*10320 Riva	*10321 Heather	*10314 Brick	*10315 Scarlett	*10313 Lipstick	*10349 Fiord	*10356 Anchor	*10355 Rhino	*10348 Seagull	*10301 Alabaster
*10308 Canary	*10309 Dandelion	*10310 Brass	*10311 Carrot	*10312 Syrup	*10303 Barley	*10354 Trout	*10336 Abalone	*10335 Pail	*10302 Dough
*10306 Spelt	*10307 Straw	*10340 Tapestry	*10338 Elm	*10334 Farthing	*10304 Talc	*10352 Laurel	*10323 Shoreline	*10324 Mannequin	*10325 Greenwich
*10358 Harbour	*10357 Trellis	*10359 Wynard	*10339 Brunette	*10360 Noir	*10327 Tree House	*10326 Dark Beach	*10328 Cascade	*10329 Tortilla	*10337 Cove
*10351 Yale	*10350 Cadet	*10346 Aegean	*10345 Sardinia	*10344 Hunter	*10330 Tawny	*10331 Gingerbread	*10333 Oaky	*10353 Alder	*10341 Buckhorn

Colour variations can be expected to occur within each hide, from hide to hide and from batch to batch.

SYDNEY HEAD OFFICE - 16 Anderson Street, Banksmeadow, NSW 2019 | P: +61 2 9355 3600 | F: +61 2 9355 3660 | E: info@leatherco.com.au
MELBOURNE - 107-109 Sackville Street, Collingwood, VIC 3066 | P: +61 3 9417 3466 | F: +61 3 9416 1514 | E: nswmel@leatherco.com.au



FULL ANILINE LEATHER

SUNDANCE

“is a beautiful rustic full grain leather, finished with oils and waxes.”

FULL ANILINE LEATHER

Sundance is a beautiful rustic full grain leather, finished with oils and waxes which gives this range a very natural appeal. This tannage creates a warm two tone appearance with subtle a pull-up effect. Sundance is produced on best quality European hides. Natural markings and defects may be seen and these hallmarks are part of the character of the leather.



BLUE ANGEL CERTIFIED



LWG GOLD RATED

TYPE	Natural Full Grain Bovine
FINISH	Full Aniline
ORIGIN	European
SIZE	Average 4.8sq mtrs
THICKNESS	0.9 - 1.1mm
APPLICATION	Commercial / Domestic - Upholstery, Wall Panels & Curtains
FIRE RATING & CERTIFICATION	AS/NZS 1530.3-1999 AS/NZS 3837-1998 BS EN 1021-1-2:2006 BS 5852:1979 UNI EN ISO 14001:2015 ISO 5660.1-2015 UNI EN ISO 9001: 2015
COMPLIANCE TO CHEMICAL COMPOSITION (R.E.A.C.H)	ISO 17226 -1:2008 ISO 17075-2:2017 EN ISO 17234 -1:2010
FLEXING ENDURANCE	EN ISO 5402 > 50,000 CYCLES
COLOUR FASTNESS TO LIGHT	EN ISO 105 B02 (MET.5) ≥ 2 BLU SCALE
COLOUR FASTNESS TO AND FRO RUBBING	EN ISO 11640:1998 Dry 50 ≥ 3/4 Wet 20 ≥ 3 Sweat 20 ≥ 3 EN ISO 11641 Ph8
TEAR STRENGTH, SINGLE EDGE TEAR	EN ISO 3377-1 ≥ 20N
CARE INSTRUCTIONS	Vacuum regularly with soft brush. Use a damp white cloth that is colourfast and wipe regularly. Do not use detergents, solvents, abrasives. Protect from direct sunlight and heat sources. Avoid sharp objects.

[VIEW ENVIRONMENTAL ACCREDITATIONS & FULL SPECIFICATION DETAILS](#)

SUNDANCE

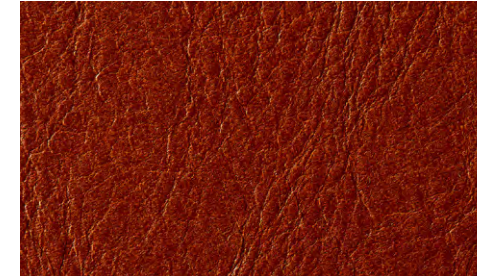
REQUEST A SAMPLE



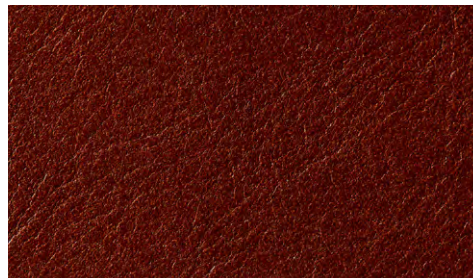
Macadamia



Driftwood



Brindle



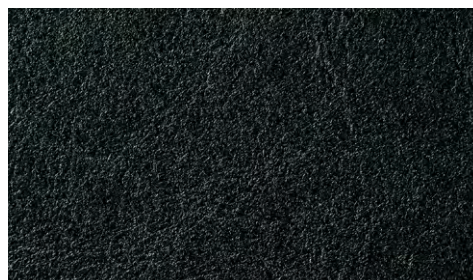
Cuba



Bark



Spruce



Nero



Toffee



Pistacio

A unique quality of aniline leathers is that colour variations can occur within each hide, from hide to hide and from batch to batch. All leather for customer orders will be supplied within commercial tolerance.

SYDNEY HEAD OFFICE - 16 Anderson Street, Banksmeadow, NSW 2019 | P: +61 2 9355 3600 | F: +61 2 9355 3660 | E: info@leatherco.com.au
MELBOURNE - 107-109 Sackville Street, Collingwood, VIC 3066 | P: +61 3 9417 3466 | F: +61 3 9416 1514 | E: nsw/mel@leatherco.com.au

MURANO

“is an aniline leather with rustic warm tones”

FULL ANILINE LEATHER

Murano is an aniline leather with a rustic appearance in a palette of sophisticated warm colour tones. The leather is produced on top quality European hides and is perfect for residential and commercial applications. Nature’s hallmarks of heal scars, growth marks, etc will be on display evident proving the authenticity of this beautiful leather.



BLUE ANGEL CERTIFIED



LWG GOLD RATED

TYPE	Natural Full Grain Bovine
FINISH	Full Aniline
ORIGIN	European
SIZE	Average 4.8sq mtrs
THICKNESS	0.9 - 1.1mm
APPLICATION	Commercial / Domestic - Upholstery, Wall Panels & Curtains
FIRE RATING & CERTIFICATION	AS/NZS 3837-1998 EN ISO 1021-1-2:2006 BS 5852:1979 CAL TB-117 (2013, Sec. 1) ISO 5660.1-2015 UNI EN ISO 14001:2015 UNI EN ISO 9001: 2015 FAR A & FAR B (Available Upon Request)
COMPLIANCE TO CHEMICAL COMPOSITION (R.E.A.C.H)	ISO 17226 -1:2008 ISO 17075-2:2017 EN ISO 17234 -1:2010
FLEXING ENDURANCE	EN ISO 5402 > 50,000 CYCLES
COLOUR FASTNESS TO LIGHT	EN ISO 105 B02 (MET.5) ≥ 3 BLU SCALE
COLOUR FASTNESS TO AND FRO RUBBING	EN ISO 11640:1998 Dry 50 ≥ 3 Wet 20 ≥ 3 Sweat 20 ≥ 3 EN ISO 11641 Ph8
TEAR STRENGTH, SINGLE EDGE TEAR	EN ISO 3377-1 ≥ 20N
CARE INSTRUCTIONS	Vacuum regularly with soft brush. Use a damp white cloth that is colourfast and wipe regularly. Do not use detergents, solvents, abrasives. Protect from direct sunlight and heat sources. Avoid sharp objects.

[VIEW ENVIRONMENTAL ACCREDITATIONS & FULL SPECIFICATION DETAILS](#)

MURANO

* INDICATES INDENT COLOURS
(ALSO AVAILABLE IN PERFORATION AND EMBOSSED)

EMBOSSING OPTIONS

*PERFORATION OPTIONS

REQUEST A SAMPLE



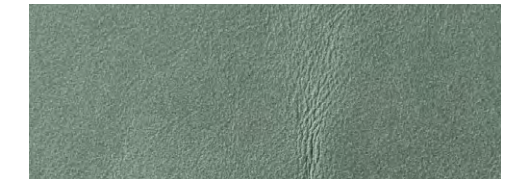
Brunswick



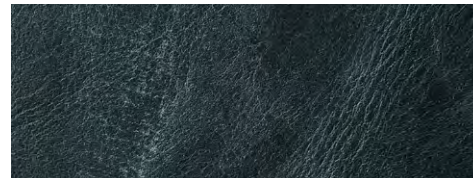
*Taupe 1606



*Nude 1615



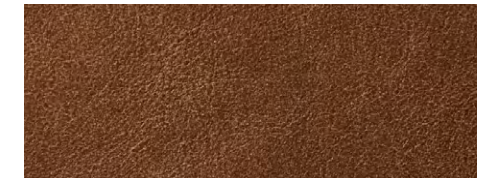
*Light Sage 1609



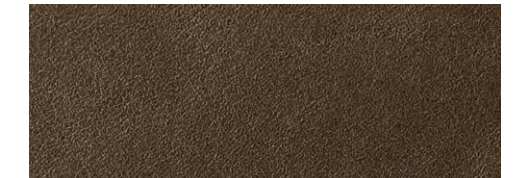
Onyx



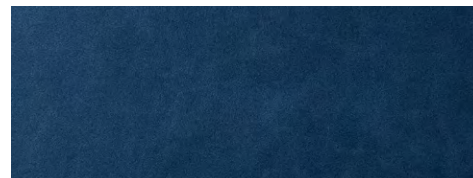
*Sand 1620



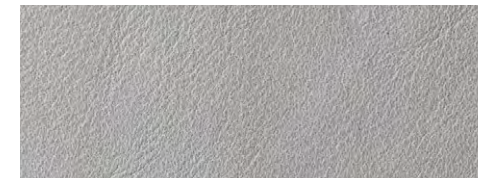
*Daino 1605



*Mud 1619



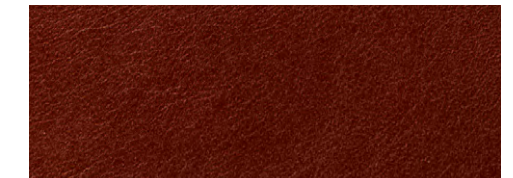
*Nocturne 1612



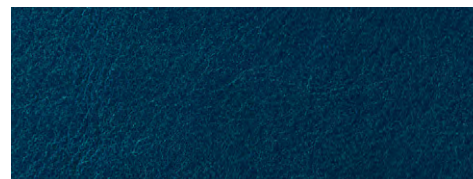
*Ash 1614



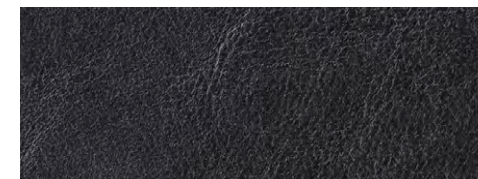
*Tan 1602



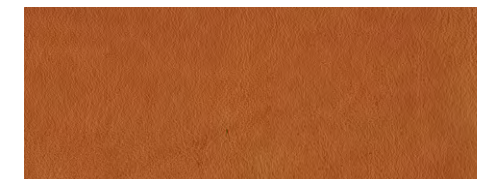
*Saddle 1613



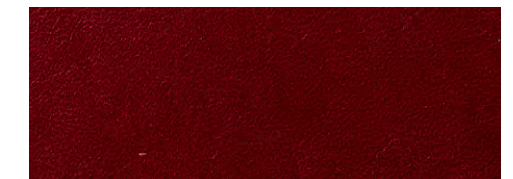
*Ceruleo 1611



*Grey 1616



*Rust 1603



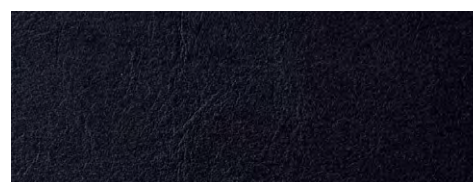
*Geranio 1604



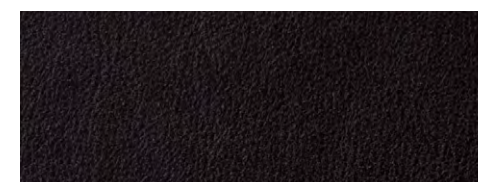
Ivory



Cement



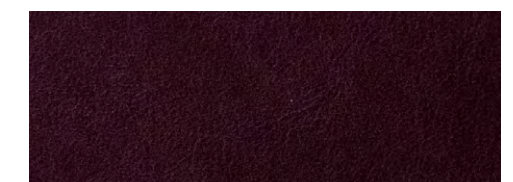
*Lavagna 1617



*Moro 1621



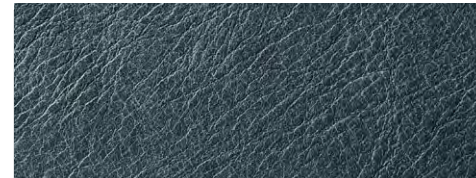
*Kayak 1601



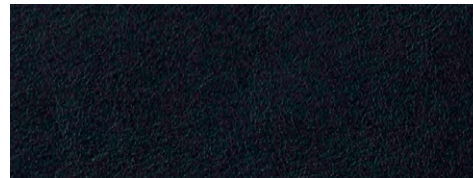
*Blackberry 1608



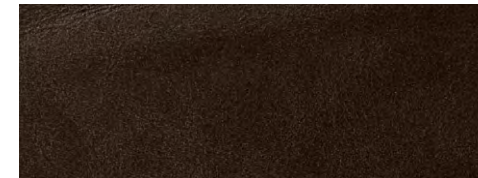
Tan



Baltic



*Blank Ink 1618



*Coffee 1607

A unique quality of aniline leathers is that colour variations can occur within each hide, from hide to hide and from batch to batch. All leather for customer orders will be supplied within commercial tolerance.

SYDNEY HEAD OFFICE - 16 Anderson Street, Banksmeadow, NSW 2019 | P: +61 2 9355 3600 | F: +61 2 9355 3660 | E: info@leatherco.com.au
MELBOURNE - 107-109 Sackville Street, Collingwood, VIC 3066 | P: +61 3 9417 3466 | F: +61 3 9416 1514 | E: nswmel@leatherco.com.au

LAGUNA

“is a very unique Aniline with an aged pull-up effect to it.”

FULL ANILINE LEATHER

The Laguna range of leathers is a very unique Aniline with an aged pull-up effect to it. The finish of this leather creates a very rustic aged look which gives a beautiful vintage expression to any environment. This range is produced on top quality European hides. Natural markings and defects may be seen and these hallmarks are part of the character of the leather. The Laguna is suitable for use in Domestic and Commercial applications.



BLUE ANGEL CERTIFIED



LWG GOLD RATED

TYPE	Natural Full Grain Bovine
FINISH	Full Aniline Pull Up
ORIGIN	European
SIZE	Average 4.8sq mtrs
THICKNESS	0.9 - 1.1mm
APPLICATION	Commercial / Domestic - Upholstery, Wall Panels & Curtains
FIRE RATING & CERTIFICATION	AS/NZS 1530.3:1999 AS/NZS 3837:1998 EN ISO 1021-1 & 1021-2 UNI EN ISO 9001: 2015 Environmental UNI EN ISO 14001:2015 ISO 5660.1-2015 BS 5852:1979 BS EN 1021-1-2:2006
COMPLIANCE TO CHEMICAL COMPOSITION (R.E.A.C.H)	ISO 17226 -1:2008 ISO 17075-2:2017 EN ISO 17234 -1:2010
FLEXING ENDURANCE	EN ISO 5402 > 50,000 Cycles
COLOUR FASTNESS TO LIGHT	EN ISO 105 B02 (Met.5) ≥ 3 Blu Scale
COLOUR FASTNESS TO AND FRO RUBBING	EN ISO 11640:1998 Dry 50 ≥ 3 Wet 20 ≥ 3 Sweat 20 ≥ 2 EN ISO 11641 Ph8
TEAR STRENGTH, SINGLE EDGE TEAR	EN ISO 3377-1 ≥ 20N
CARE INSTRUCTIONS	Vacuum regularly with soft brush. Use a damp white cloth that is colourfast and wipe regularly. Do not use detergents, solvents, abrasives. Protect from direct sunlight and heat sources. Avoid sharp objects.

[VIEW ENVIRONMENTAL ACCREDITATIONS & FULL SPECIFICATION DETAILS](#)

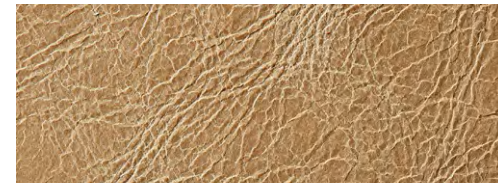
LAGUNA

* INDICATES INDENT COLOURS
(ALSO AVAILABLE IN PERFORATION AND EMBOSING)

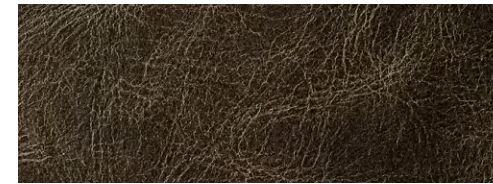
EMBOSSING OPTIONS

*PERFORATION OPTIONS

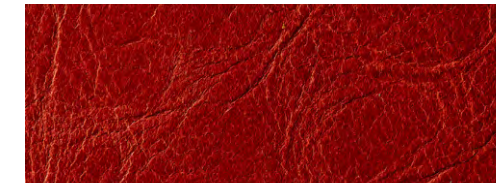
REQUEST A SAMPLE



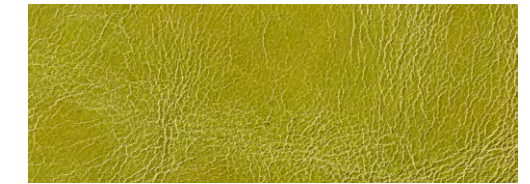
Sesame



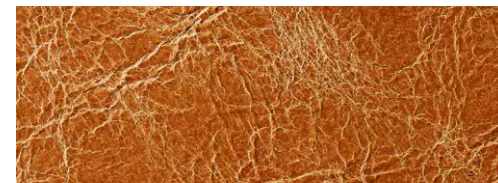
Hermitage



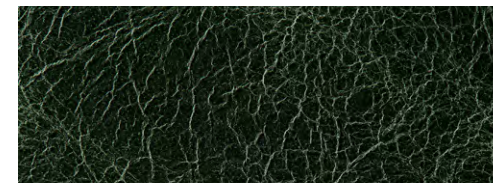
*Rust 2009



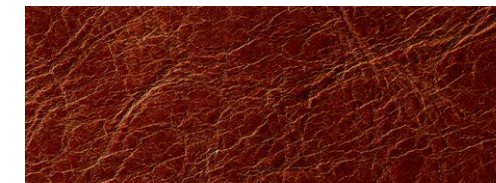
*Celery 2010



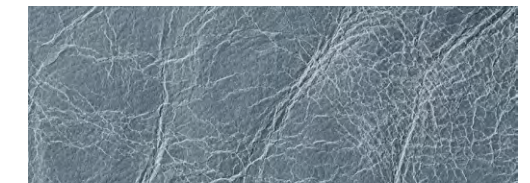
Biscotto



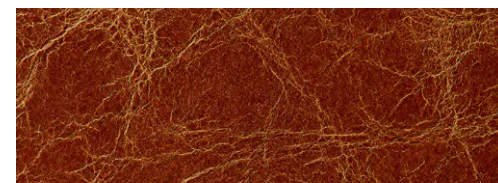
Emerald



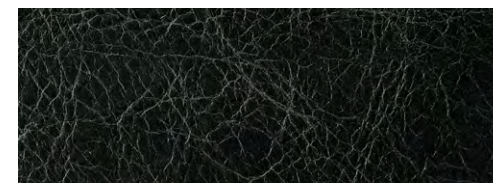
*Cognac 2008



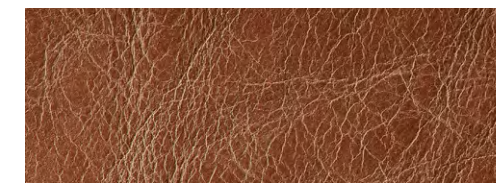
*French Blue 2011



Oak



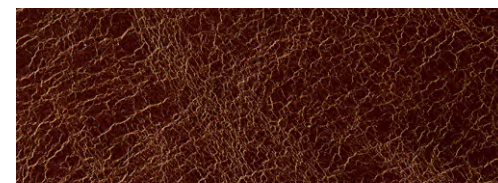
Cypress



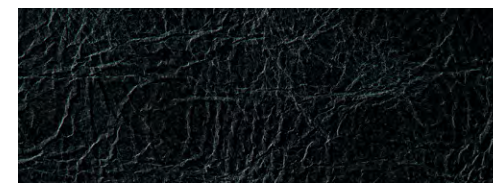
*Cobblestone 2001



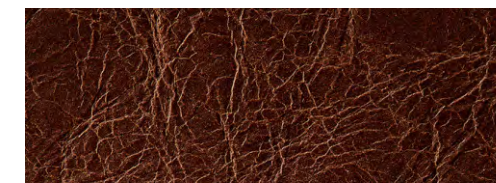
*Notte 2012



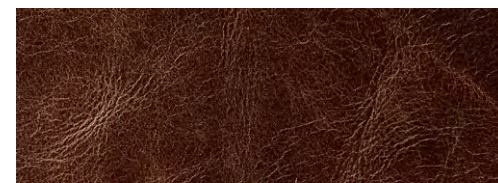
Pecan



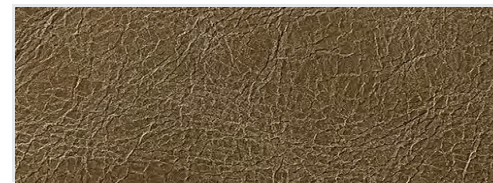
Blackwood



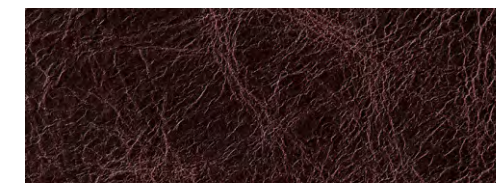
*Brown 2006



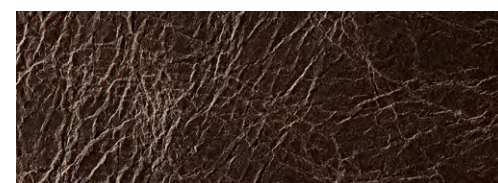
Cedar



Oatmeal



*Maple 2005



Cafe

A unique quality of aniline leathers is that colour variations can occur within each hide, from hide to hide and from batch to batch. All leather for customer orders will be supplied within commercial tolerance.

SYDNEY HEAD OFFICE - 16 Anderson Street, Banksmeadow, NSW 2019 | P: +61 2 9355 3600 | F: +61 2 9355 3660 | E: info@leatherco.com.au
MELBOURNE - 107-109 Sackville Street, Collingwood, VIC 3066 | P: +61 3 9417 3466 | F: +61 3 9416 1514 | E: nswmel@leatherco.com.au

REGAL

“has a subtle two-tone finish revealing rich tones that provide this article with prestige and charm.”

FULL ANILINE LEATHER

This range of leather is finished using vacuum dryers together with oils and waxes. This treatment gives the leather its unique two-tone finish with a ‘pull up’ effect that provides this article with prestige and charm. Regal is produced on full grain best quality European hides with a waxy smooth touch and a bright aniline appearance. This aniline finish means the natural markings and defects of the hide may be evident and this is understood to be a part of the character of the leather.



WHEELMARK CERTIFICATION



BLUE ANGEL CERTIFIED



LWG GOLD RATED

TYPE	Natural Full Grain Bovine
FINISH	Full Aniline Pull Up
ORIGIN	European
SIZE	Average 4.8sq mtrs
THICKNESS	0.9 - 1.1mm
APPLICATION	Commercial / Domestic - Upholstery, Wall Panels & Curtains
FIRE RATING & CERTIFICATION	BS EN 1021-1-2:2006 BS 5852:1979 AS/NZS 3837-1998 ISO 5660- 1 - 2015 UNI EN ISO 9001: 2015 UNI EN ISO 14001:2015 IMO A 652 CAL TB-117 (2013, Sec.1)
COMPLIANCE TO CHEMICAL COMPOSITION (R.E.A.C.H)	ISO 17226 -1:2008 ISO 17075-2:2017 ISO 17075-2:2017
FLEXING ENDURANCE	EN ISO 5402 > 50,000 Cycles
COLOUR FASTNESS TO LIGHT	EN ISO 105 B02 (Met.5) ≥ 2 Blu Scale
COLOUR FASTNESS TO AND FRO RUBBING	EN ISO 11640:1998 Dry 50 ≥ 3/4 Wet 20 ≥ 3 Sweat 20 ≥ 3 EN ISO 11641 Ph8
TEAR STRENGTH, SINGLE EDGE TEAR	EN ISO 3377-1 ≥ 20N
CARE INSTRUCTIONS	Vacuum regularly with soft brush. Use a damp white cloth that is colourfast and wipe regularly. Do not use detergents, solvents, abrasives. Protect from direct sunlight and heat sources. Avoid sharp objects.

[VIEW ENVIRONMENTAL ACCREDITATIONS & FULL SPECIFICATION DETAILS](#)

REGAL

* INDICATES INDENT COLOURS
(ALSO AVAILABLE IN PERFORATION AND EMBOSSING)

EMBOSSING OPTIONS

*PERFORATION OPTIONS

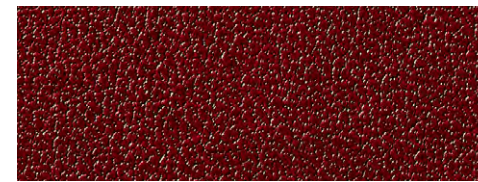
REQUEST A SAMPLE



*Perla 817



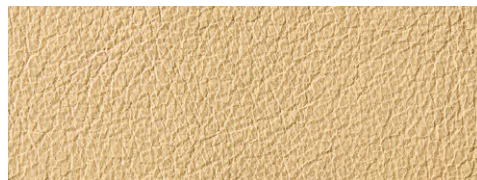
*Sand 814



*Red 803



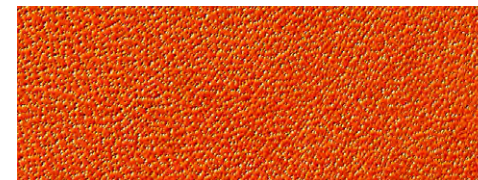
*Red Fire 820



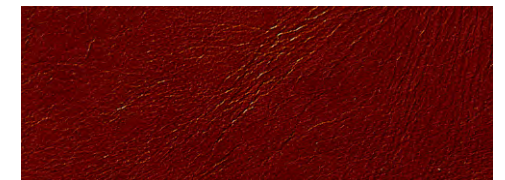
*Torrone 827



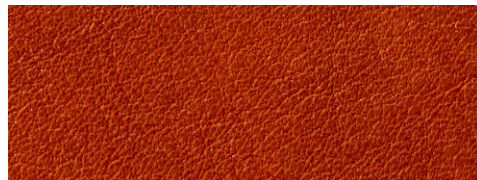
*Solis 819



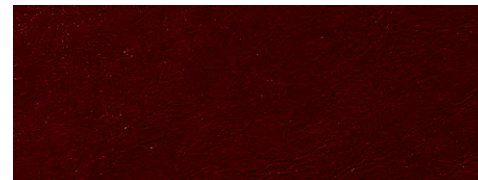
*Arancio 809



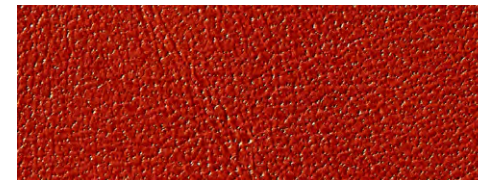
*Cuoio 835



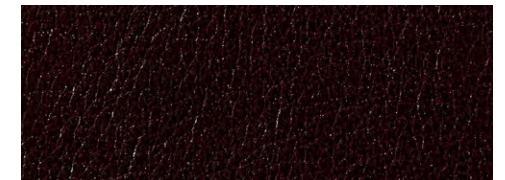
*Chestnut 805



*Rust 802



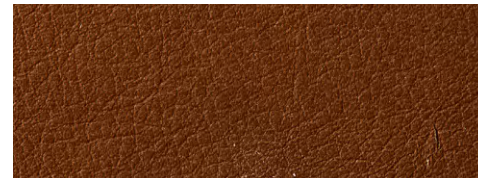
*Siena 801



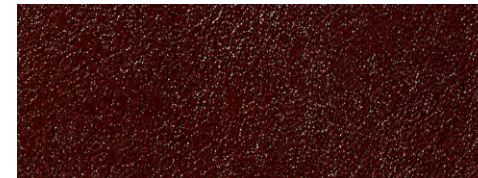
*Burgundy 808



*Ebano 811



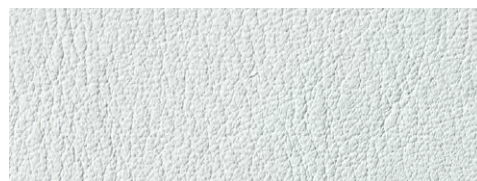
*Baobab 810



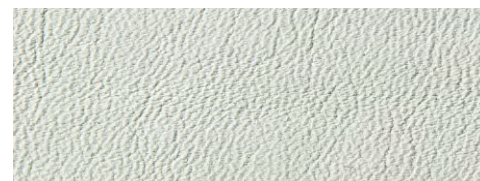
*Mogano 804



*Anthracite 822



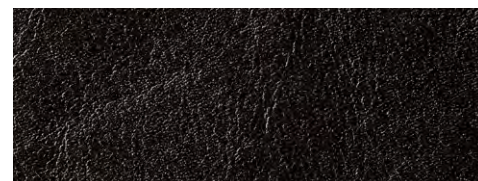
*Bianco 818



*Polvere 833



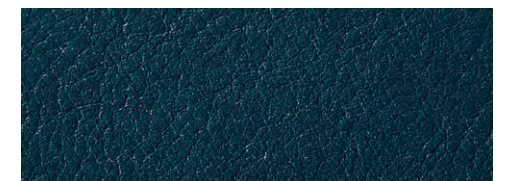
*Cemento 824



*Dark Brown 806



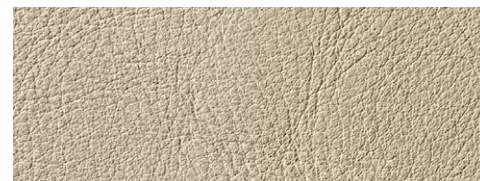
*Nero 807



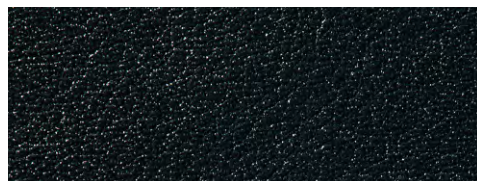
*Cobalto 831



*Panna 834



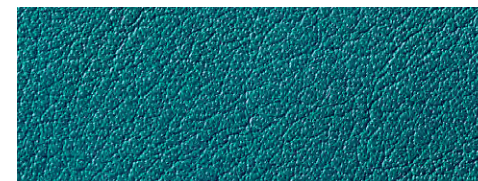
*Chic 823



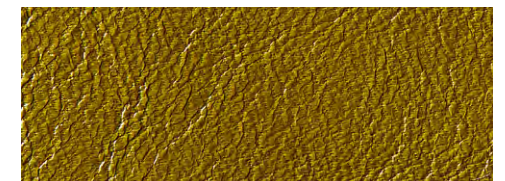
*Braies 832



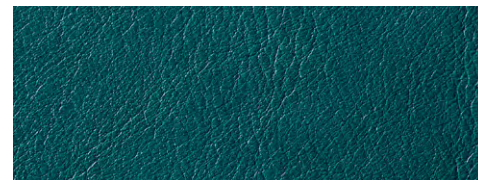
*Taupe 825



*Celeste 830



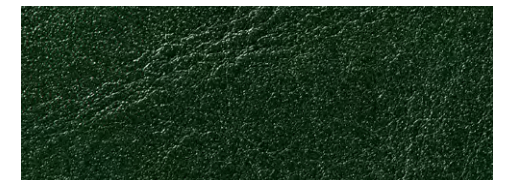
*Green 812



*Peacock 829



*Seasalt 826



*Fir 821

A unique quality of aniline leathers is that colour variations can occur within each hide, from hide to hide and from batch to batch. All leather for customer orders will be supplied within commercial tolerance.

SYDNEY HEAD OFFICE - 16 Anderson Street, Banksmeadow, NSW 2019 | P: +61 2 9355 3600 | F: +61 2 9355 3660 | E: info@leatherco.com.au
MELBOURNE - 107-109 Sackville Street, Collingwood, VIC 3066 | P: +61 3 9417 3466 | F: +61 3 9416 1514 | E: nswmel@leatherco.com.au

PANAMA

“pure aniline natural leather”

FULL ANILINE LEATHER

Panama is pure aniline natural leather and is produced on the finest European raw material. Utilising natural oils and waxes in the drum, this leather produces a classic transparent finish with a slight pull up effect. Mineral tanned and Environmentally friendly this leather will last and age forever. Natural hallmarks in the leather and colour variation may be seen and illustrate the authenticity and purity of the leather. The Panama is suitable for use in both Domestic and Commercial applications.



BLUE ANGEL CERTIFIED



LWG GOLD RATED

TYPE	Natural Full Grain Bovine
FINISH	Aniline
ORIGIN	European
SIZE	Average 4.8sq mtrs
THICKNESS	1.2 - 1.4mm
APPLICATION	Commercial / Domestic - Upholstery, Wall Panels & Curtains
FIRE RATING & CERTIFICATION	EN ISO 1021-1-2:2006 BS 5852:1979 CAL TB-117 (2013, Sec. 1) UNI EN ISO 14001:2015 UNI EN ISO 9001: 2015
COMPLIANCE TO CHEMICAL COMPOSITION (R.E.A.C.H)	SO 17226 -1:2008 ISO 17075-2:2017 EN ISO 17234 -1:2010
FLEXING ENDURANCE	EN ISO 5402 > 50,000 CYCLES
COLOUR FASTNESS TO LIGHT	EN ISO 105 B02 (MET.5) ≥ 2 BLU SCALE
COLOUR FASTNESS TO AND FRO RUBBING	EN ISO 11640:1998 Dry 50 ≥ 3
TEAR STRENGTH, SINGLE EDGE TEAR	TEAR EN ISO 3377-1 ≥ 20N
CARE INSTRUCTIONS	Vacuum regularly with soft brush. Use a damp white cloth that is colourfast and wipe regularly. Do not use detergents, solvents, abrasives. Protect from direct sunlight and heat sources. Avoid sharp objects.

[VIEW ENVIRONMENTAL ACCREDITATIONS & FULL SPECIFICATION DETAILS](#)

PANAMA

* INDICATES INDENT COLOURS
(ALSO AVAILABLE IN PERFORATION AND EMBOSING)

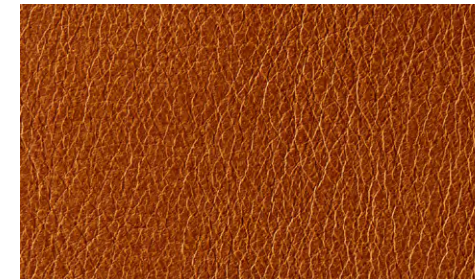
EMBOSSING OPTIONS

*PERFORATION OPTIONS

REQUEST A SAMPLE



*Taupe 1502



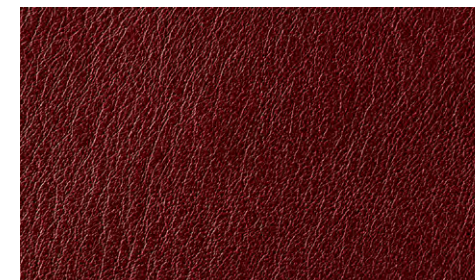
*Cognac 1503



*Saddle 1501



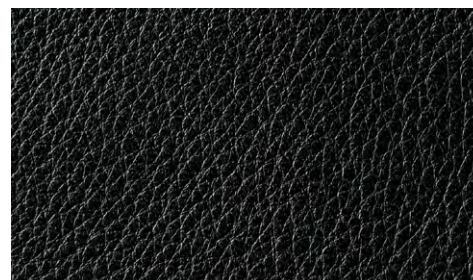
*Dark Brown 1504



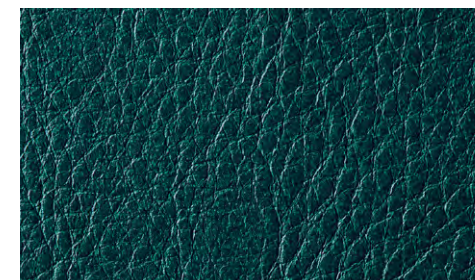
*Oxblood 1507



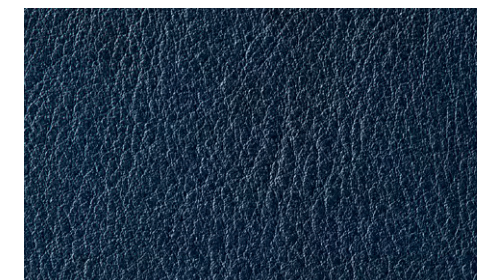
*Orange 1506



*Black 1508



*Emerald 1505



*Blue Nocturne 1509

A unique quality of aniline leathers is that colour variations can occur within each hide, from hide to hide and from batch to batch. All leather for customer orders will be supplied within commercial tolerance.

SYDNEY HEAD OFFICE - 16 Anderson Street, Banksmeadow, NSW 2019 | P: +61 2 9355 3600 | F: +61 2 9355 3660 | E: info@leatherco.com.au
MELBOURNE - 107-109 Sackville Street, Collingwood, VIC 3066 | P: +61 3 9417 3466 | F: +61 3 9416 1514 | E: nsw/mel@leatherco.com.au

NORFOLK

“is a fine textured Nubuck with an aged effect.”

FULL ANILINE LEATHER

Finished by hand, Norfolk incorporates a vintage distressed look with a natural texture. Norfolk is produced on best quality European hides, low traffic commercial and residential applications. All defects and variation in colour within the hide and from hide to hide, are part of its natural allure. These are an intrinsic part of the leather and not considered as a fault.



BLUE ANGEL CERTIFIED



LWG GOLD RATED

TYPE	Nubuck
FINISH	Distressed Vintage Effect
ORIGIN	European
SIZE	Average 4.8 - 5.0sq mtrs
THICKNESS	0.9 - 1.1mm
APPLICATION	Low Traffic Commercial / Domestic / Curtains
FLEXING ENDURANCE	ISO 5402 50,000 CYCLES
COLOUR FASTNESS TO LIGHT	EN ISO 105 B02 (MET.5) 5 BLU SCALE ≥ 3
WET RUBBING	UNI EN ISO 11640 20 cycles - 3 grey scale
DRY RUBBING	UNI EN ISO 11640 50 cycles grey scale ¾
PERSPIRATION RUBBING	UNI EN ISO 11640 20 cycles - 3 grey scale
BURNING BEHAVIOUR TO CIGARETTE & MATCH FLAME	BS5852: 1979 BS EN1021-1-2: 2006 Pass
TEAR STRENGTH	ISO 3377-1 ≥ 20 N
CARE INSTRUCTIONS	Vacuum regularly with soft brush. Use a damp white cloth that is colourfast and wipe regularly. Do not use detergents, solvents, abrasives. Protect from direct sunlight and heat sources. Avoid sharp objects.

[VIEW ENVIRONMENTAL ACCREDITATIONS & FULL SPECIFICATION DETAILS](#)

NORFOLK

* INDICATES INDENT COLOURS
(ALSO AVAILABLE IN PERFORATION)

*PERFORATION OPTIONS

REQUEST A SAMPLE



*Tan 4023



*Light 4011



*Papyrus 4010



*Camel 4025



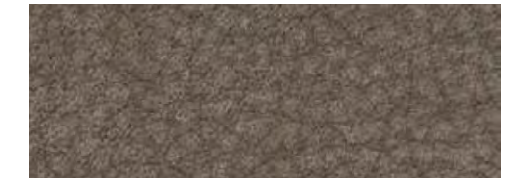
*Yam 4022



*Nuage 4014



*Terra 4003



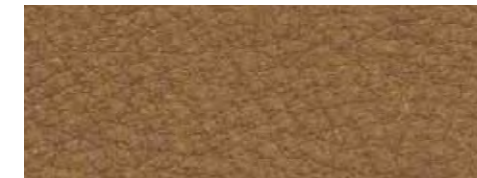
*Cioccolato 4002



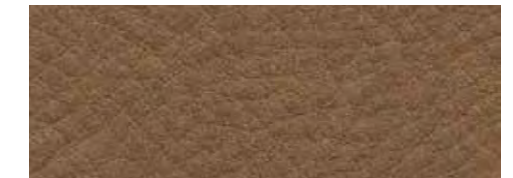
*Liz 4015



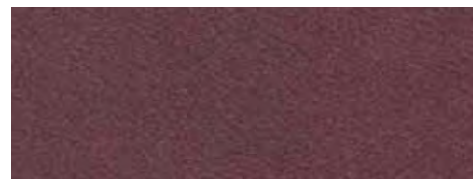
*Mango 4030



*Cuoio 4001



*Antilope 4019



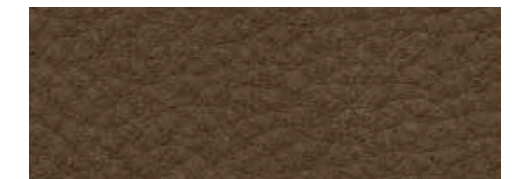
*Cardinal 4016



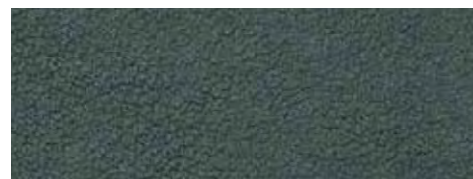
*Sky 4012



*Old Copper 4024



*Milk Chocolate 4029



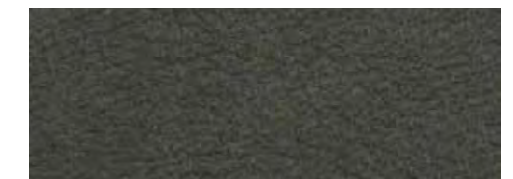
*Tormalina 4020



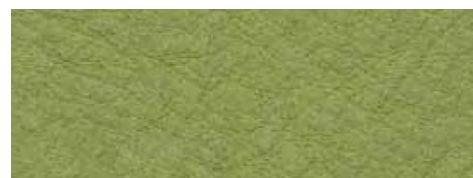
*Pacific 4021



*Cabone 4004



*Antracite 4027



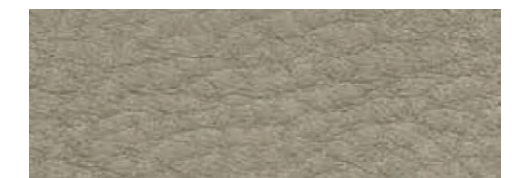
*Aloe 4017



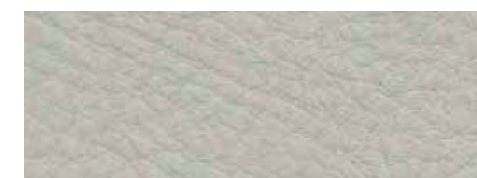
*Birch 4018



*Conifer 4013



*Grigio 4007



*Ciment 4009



*Pietra 4028

A unique quality of aniline leathers is that colour variations can occur within each hide, from hide to hide and from batch to batch. All leather for customer orders will be supplied within commercial tolerance.

SYDNEY HEAD OFFICE - 16 Anderson Street, Banksmeadow, NSW 2019 | P: +61 2 9355 3600 | F: +61 2 9355 3660 | E: info@leatherco.com.au
MELBOURNE - 107-109 Sackville Street, Collingwood, VIC 3066 | P: +61 3 9417 3466 | F: +61 3 9416 1514 | E: nswmel@leatherco.com.au

NUBUCK

“soft, velvet touch
and natural appearance,
sophisticated and elegant.”

FULL ANILINE LEATHER

Nubuck is an Aniline leather with a rich texture and beautiful soft touch, and offers great comfort. The possible presence of any imperfections, testify the authenticity and the natural look of a pure European aniline leather. Being an aniline leather, there will be variation in colour from delivery to delivery.



BLUE ANGEL CERTIFIED



LWG GOLD RATED

TYPE	Nabuk Finish / Natural Grain
FINISH	Aniline Dyed / Suede Finish
ORIGIN	European
SIZE	Aniline Dyed / Suede Finish
THICKNESS	1.2 - 1.4mm
APPLICATION	Low Traffic / Commercial / Domestic / Curtains
COLOUR FASTNESS TO ARTIFICIAL LIGHT	UNI EN ISO 105 B02 I ≥ 2 Blu Scale
COLOUR FASTNESS TO RUBBING	UNI EN ISO 11640:1998 DRY 50 ≥ 3 UNI EN ISO 11640:1998 WET 10 ≥ 3
TEAR STRENGTH	UNI EN ISO 3377-1 I ≥ 20N
CARE INSTRUCTIONS	Vacuum regularly with soft brush. Use a damp white cloth that is colourfast and wipe regularly. Do not use detergents, solvents, abrasives. Protect from direct sunlight and heat sources. Avoid sharp objects.

[VIEW ENVIRONMENTAL ACCREDITATIONS & FULL SPECIFICATION DETAILS](#)

NUBUCK

* INDICATES INDENT COLOURS
(ALSO AVAILABLE IN PERFORATION)

*PERFORATION OPTIONS

REQUEST A SAMPLE



*1705 Chalk



*1706 Concrete



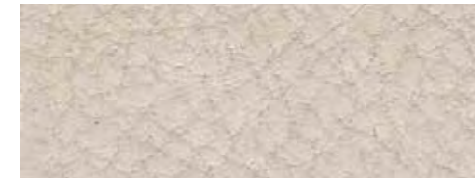
*1717 Dream



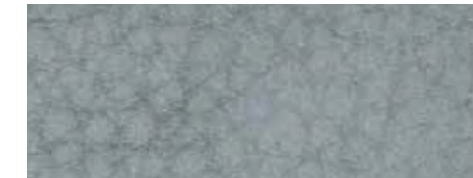
*1702 Emerald



*1716 Doeskin



*1719 Kangaroo



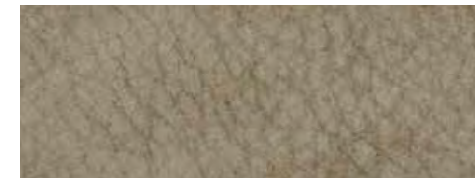
*1710 Plomo



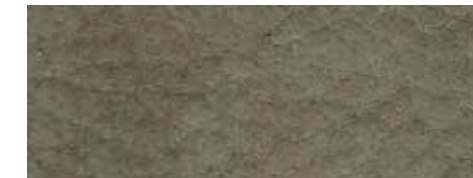
*1712 Grafite



*1709 Caramel



*1715 Elefant



*1701 Caqui



*1711 Cenere



*1718 Nude



*1720 Vision



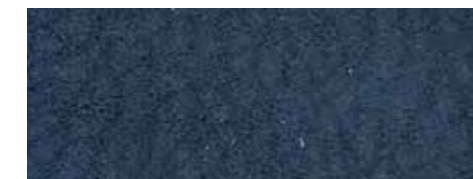
*1721 Ematite



*1714 Lucky



*1707 Duck Bill



*1703 True Blue



*1704 Chocolate Forest



*1708 Cuoio



*1713 Ardesia

A unique quality of aniline leathers is that colour variations can occur within each hide, from hide to hide and from batch to batch. All leather for customer orders will be supplied within commercial tolerance.

SYDNEY HEAD OFFICE - 16 Anderson Street, Banksmeadow, NSW 2019 | P: +61 2 9355 3600 | F: +61 2 9355 3660 | E: info@leatherco.com.au
MELBOURNE - 107-109 Sackville Street, Collingwood, VIC 3066 | P: +61 3 9417 3466 | F: +61 3 9416 1514 | E: nsw/mel@leatherco.com.au

BOTANICAL

ORGANIC • SUSTAINABLE • 100% BIODEGRADABLE

NATURAL FULL GRAIN BOVINE

Introducing our new Botanical range. This beautiful soft leather is available in a vivid selection of colours possessing a subtle pull up effect. The tanning process utilises vegetable tanning extracts that eliminates metals completely, allowing for 40% less water in production in a sophisticated process called Green technology. It is a USDA certified Bio Based Product, and utilises renewables energy throughout production. Providing a smooth premium fine grain that is fully bio-degradable, organic product & is the perfect choice for specifiers as it is suitable for commercial and domestic applications whilst possessing the stamp of approval regarding 'Environmental sustainability'. Natural markings and defects may be seen and these hallmarks are part of the character of the leather.



BLUE ANGEL CERTIFIED



LWG GOLD RATED



REACH CERTIFIED

TYPE	Natural Full Grain Bovine
FINISH	Full Aniline
ORIGIN	European
SIZE	Average 5.5 mtrs
THICKNESS	1.1 – 1.3mm
APPLICATION	Commercial/Domestic - Upholstery, Wall Panels & Curtains
FIRE RATING & CERTIFICATION	CAL TB-117 (2013, Sec. 1) UNI EN ISO 14001:21015 UNI EN ISO 9001: 2105
KEY CERTIFICATION – METAL FREE LEATHER	EN ISO 3377-1 ≥ 20N
KEY CERTIFICATION – BIO DEGRADABLE	EN ISO 3377-1 ≥ 20N
COMPLIANCE TO CHEMICAL COMPOSITION (R.E.A.C.H)	ISO 17226-1:2008 ISO 17075-2:2017 EN ISO 17234-1:2010
FLEXING ENDURANCE	EN ISO 5402 > 50,000 CYCLES
COLOUR FASTNESS TO ARTIFICIAL LIGHT	UNI EN ISO 105 B02 (MET. 5) BLUE SCALE ≥ 2
COLOUR FASTNESS TO AND FRO RUBBING	EN ISO 11640:1998 Dry 50 ≥ 3
TEAR STRENGTH, SINGLE EDGE TEAR	EN ISO 3377-1 ≥ 20N
CARE INSTRUCTIONS	Vacuum regularly with soft brush. Use a damp white cloth that is colourfast and wipe regularly. Do not use detergents, solvents, abrasives. Protect from direct sunlight and heat sources. Avoid sharp objects.

[VIEW ENVIRONMENTAL ACCREDITATIONS & FULL SPECIFICATION DETAILS](#)

BOTANICAL

EMBOSSING OPTIONS

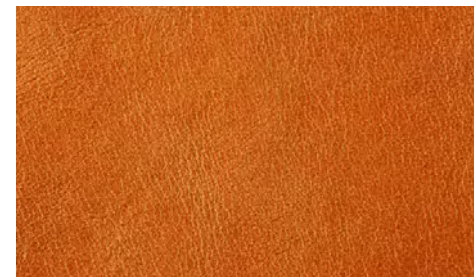
*PERFORATION OPTIONS

REQUEST A SAMPLE

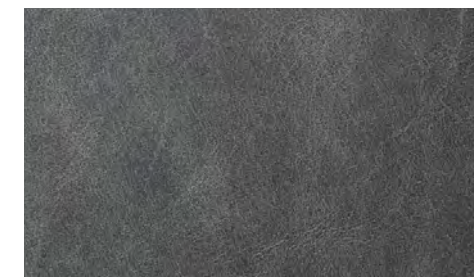
* INDICATES INDENT COLOURS
(ALSO AVAILABLE IN PERFORATION AND EMBOSSING)



*Camomile 10011



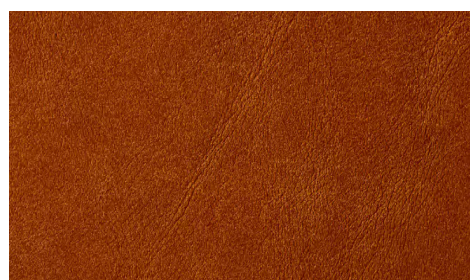
*Bitter Orange 10001



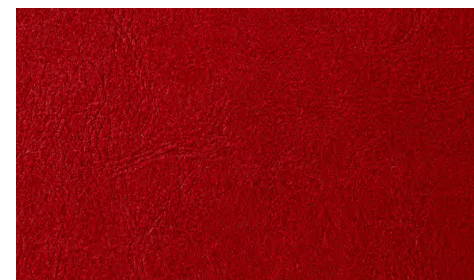
*Eucalyptus 10007



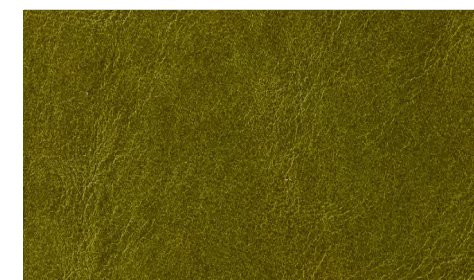
*Nutmeg 10014



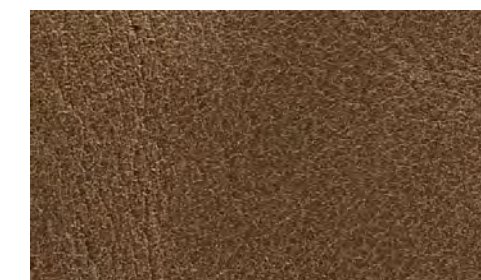
*Oregano 10004



*Tulip 10003



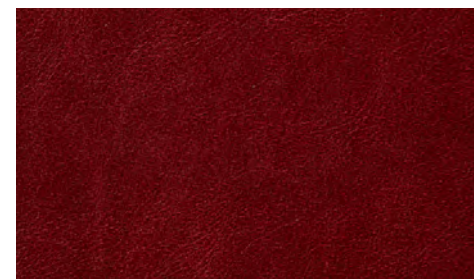
*Lime 10008



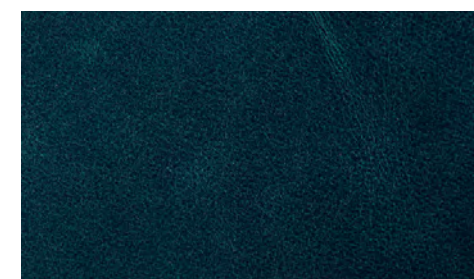
*All Spice 10015



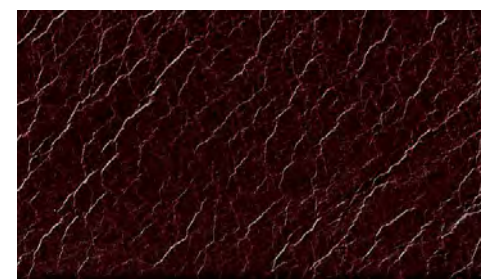
*Sandalwood 10013



*Carnation 10002



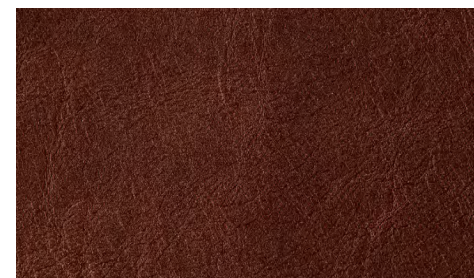
*Juniper 10009



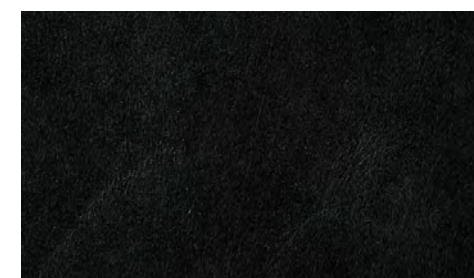
*Paprika 10016



*Cinnamon 10012



*Clove 10005



*Licorice 10010



*Cardamom 10017

A unique quality of aniline leathers is that colour variations can occur within each hide, from hide to hide and from batch to batch. All leather for customer orders will be supplied within commercial tolerance.

SYDNEY HEAD OFFICE - 16 Anderson Street, Banksmeadow, NSW 2019 | P: +61 2 9355 3600 | F: +61 2 9355 3660 | E: info@leatherco.com.au
MELBOURNE - 107-109 Sackville Street, Collingwood, VIC 3066 | P: +61 3 9417 3466 | F: +61 3 9416 1514 | E: nswmel@leatherco.com.au

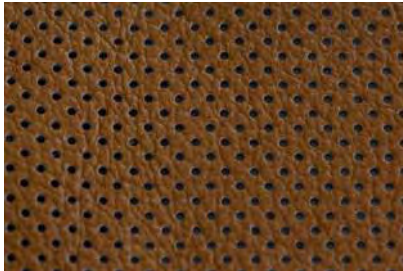
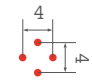
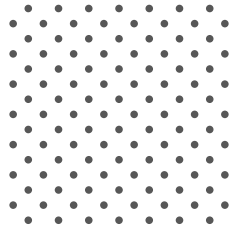

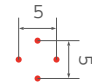
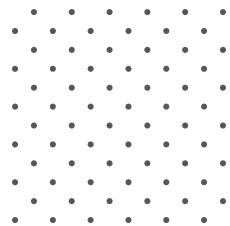

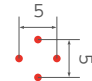
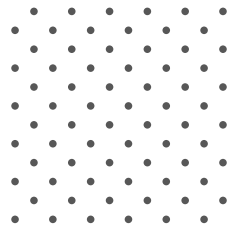

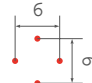
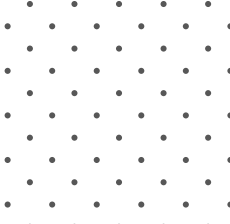

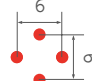
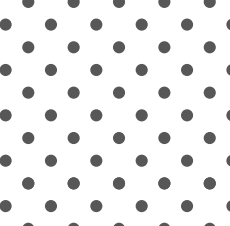


SPECIALITY DESIGNS

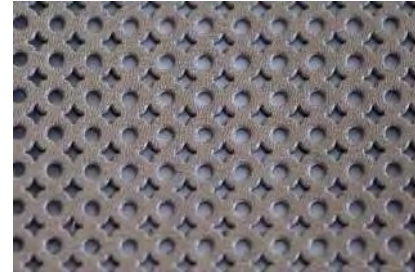
PERFORATION OPTIONS AVAILABLE

All indent leathers can be printed in these 14 different perforated designs.

- Perforation is done on half hides as the machine only perforates this width.
- Please note there will be some overlapping when printed.
- Black Daytona Perforation F608 is kept in stock. All other colours are indent and require minimum orders of 1 hide (as noted as 2 Half Hides).
- Perforation can be done on any indent leather.*
- An additional 2 weeks plus freight time to Australia to receipt the hides.
- Minimum order of 1 Hide. (which =2 half hides)
- You cannot do half perforated / half smooth hides.
- Perforations 301, 302 & 402 are only embossed or stamped and don't penetrate all the way through.

(mm, scale 1:1)	Distance/Dimension (Mm, Scale 1:1)	Composition (Mm, Scale 1:1)
 *410	 Diam: 1	
 *508	 Diam: 0,8	
 *510	 Diam: 1	
 *608	 Diam: 0,8	
 *616	 Diam: 1,6	

(mm, scale 1:1)



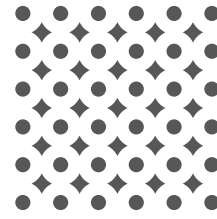
*105

Distance/Dimension
(Mm, Scale 1:1)

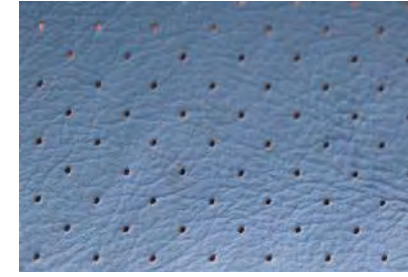


Dim: 2art. 107,40

Composition
(Mm, Scale 1:1)

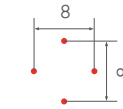


(mm, scale 1:1)



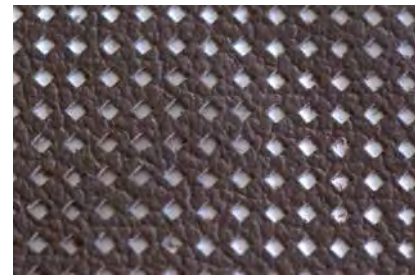
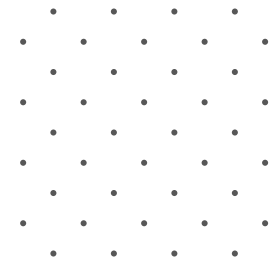
*808

Distance/Dimension
(Mm, Scale 1:1)



Diam: 0,8

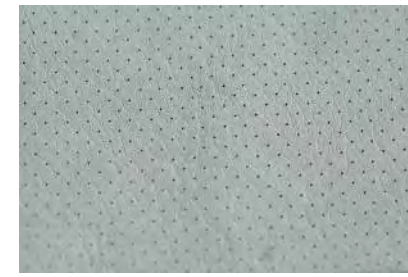
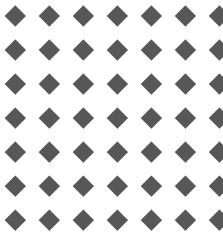
Composition
(Mm, Scale 1:1)



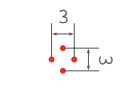
*42



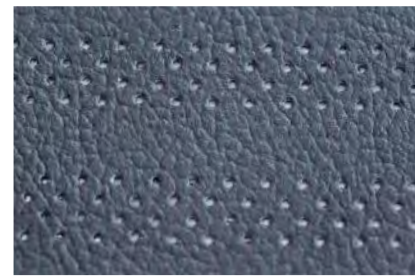
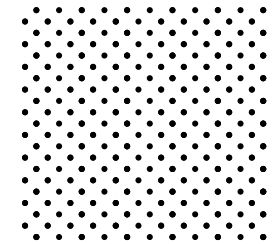
Dim: 2x2



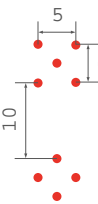
*301



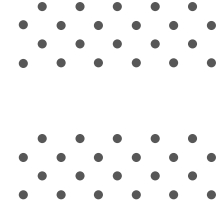
Punta piatta



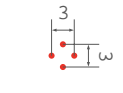
*1512



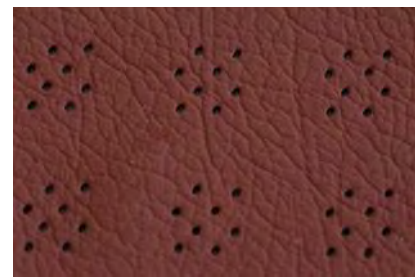
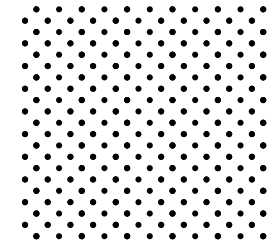
Diam: 1,2



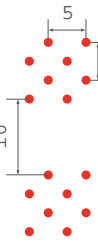
*302



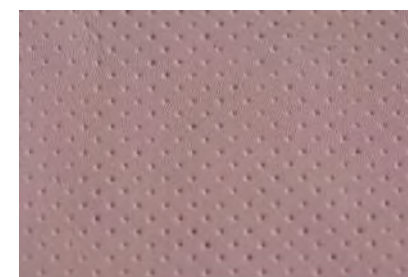
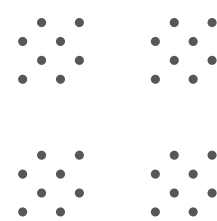
Punta tonda



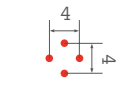
*2512



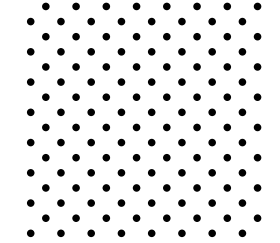
Diam: 1,2



*402



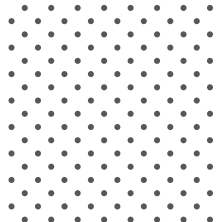
Punta tonda



*358

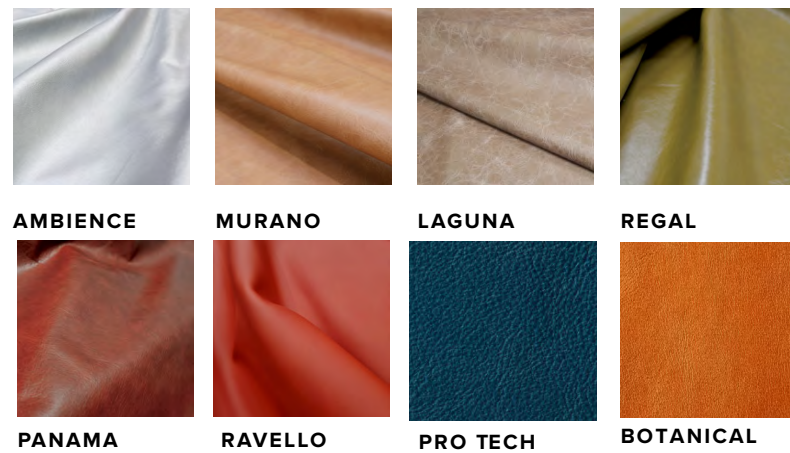


Diam: 0,8

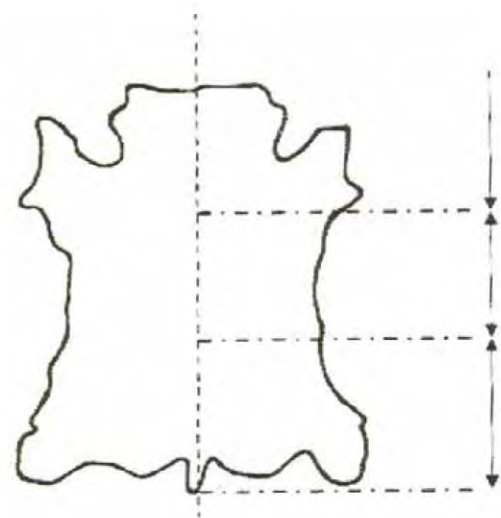


AVAILABLE EMBOSSED EFFECTS

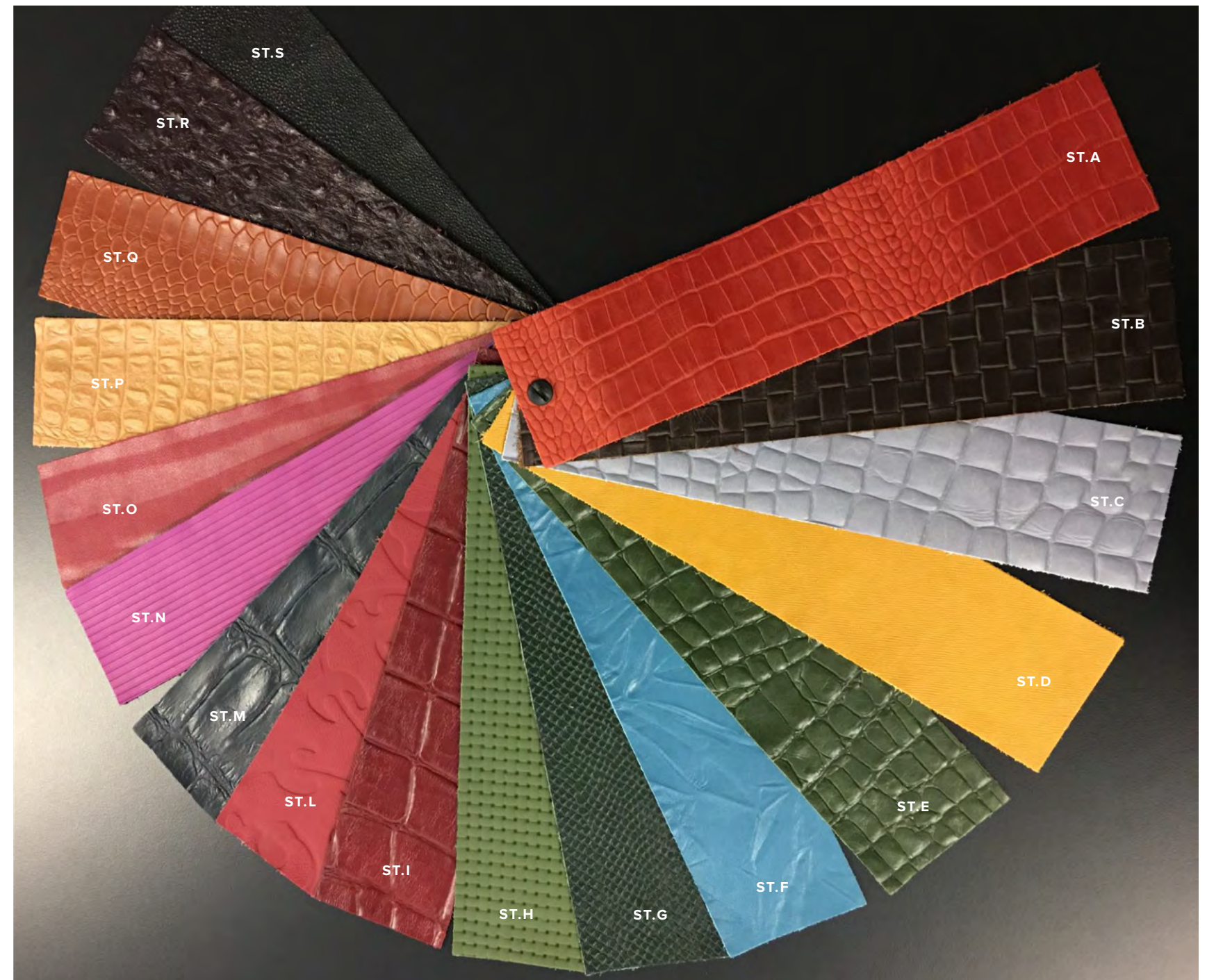
Embossed effects shown are available across the indent colour ranges below.



- 1 hide minimum purchase requirement.
- There are 17 embossed effects.
- These are done on whole hides with the print plate as per the diagram below.
- The dimension of the print plate are 105 x 110 cm and the hides are printed across from the spine towards the sides, keeping the plate horizontal as per the image below. There may be repeat lines.
- An additional 2 weeks plus freight time to Australia to receipt the hides.



PRINTING PLATE CONFIGURATION





NSW LEATHER CO. PTY LTD

SYDNEY HEAD OFFICE - 16 Anderson Street, Banksmeadow, NSW 2019 | P: +61 2 9355 3600 | F: +61 2 9355 3660 | E: info@leatherco.com.au

MELBOURNE - 107-109 Sackville Street, Collingwood, VIC 3066 | P: +61 3 9417 3466 | F: +61 3 9416 1514 | E: nswmel@leatherco.com.au

LEATHERCO.COM.AU